



**Minnamurra
Speckle Park**



SPECKLE PARK SALE

Bred for Quality & Performance

70 Purebred Speckle Park Bulls

25 two-year-old bulls and 45 yearling bulls

70 F1 Speckle/Angus PTIC Heifers

Friday 2nd September, 2022 - 1pm

'Mount Mill', Coolah Creek Rd, Coolah NSW

Bid live on AuctionsPlus

www.minnamurra.com.au

WELCOME

Welcome to Minnamurra's 8th Speckle Park Sale. With 940mls of rain this past year at Coolah and a buoyant cattle market we are entering another great season.

This is an exceptional time to be involved with Speckle Park cattle. With the growing success of the breed, demand has skyrocketed. Producers can be confident in the quality of the fantastic bloodlines available in Australia now (among the best of the Speckle Park breed). We expect to see Speckle Park continue to go from strength to strength.

This year we are excited to offer 22 Crusader 025C sons. This is the first offering of Crusader 025C calves in Australia. We have every confidence that he will prove to be an exceptional sire for the commercial industry here.

Lot Videos. Videos of all lots will be available by 8th August on our website or via the QR code on the back cover. There will be audio in real time on AuctionsPlus so you can bid live if you are unable to make it to Coolah this year.

Our Breeding Program. At Minnamurra we are committed to the continual improvement of our breeding program. After 11 years we are now turning out over 400 calves per annum. This gives us a large contemporary group to evaluate our sires. It also allows us to class deeper into our female herd to ensure that we are producing the right style of commercial bull suited to Australian conditions.

We have added top priced bulls from the JAD and Te Mooi sales this year to provide us with high quality cover bulls for our AI program. We have also added an excellent AI sire in Maungahina Rising Star R286.

Carcase Competitions. We continue to enter steers in the two major carcass competitions – the Beef Spectacular at Jindalee and the National Beef Carcass Competition at Rockhampton. We feel it is important to benchmark Speckles against all other breeds. To date they have performed extremely well, as our results on the inside back cover attest. We didn't enter the RNA Paddock to Plate this year as we had already sold all our weaners, (the prices were too good to miss). Our Angus steers did well in the Beef Spectacular though, winning the Premium Black Angus Champion Pen.

Other Activities. We are helping in the development of the Classmate visual livestock assessment app for Speckle Park breeders. This will allow objective measuring, recording and comparison of structural assessment data between animals.

Transporting your bulls. Please note our freight offer for interstate buyers, as well as free local deliveries within 150km of Mount Mill.

Thank you for your support and we wish you well with your bidding.



SALE INFORMATION

GETTING THERE

"Mount Mill" is situated 10km from Coolah, NSW. See page 75 for map & accommodation details. Sale starts at 1pm.

COVID RESTRICTIONS

The sale will be run in accordance with NSW Covid-19 protocols. Everyone will be required to register their name and contact phone number on arrival; face masks and hand gel will be available on site. There is plenty of room in the sale arena to practise social distancing. If you are unwell please do not attend. You will be able to bid online on AuctionsPlus.

PHONE BIDDING

Contact Agents 24 hours prior to sale.

SELLING SYSTEM AND BUYER'S REGISTRATION

All lots will be sold subject to the usual terms and conditions governing auction sales. Intending purchasers should obtain a Buyer's Number and registration slip available from the selling agents prior to the sale.

THE MINNAMURRA GUARANTEE

Any Minnamurra Speckle Park bull that proves to be structurally unsound, infertile or incapable of service is guaranteed for up to 6 months from date of sale.

Under these circumstances Minnamurra will replace the bull with a satisfactory substitute if available or issue a refund equal to the purchase price, less the salvage value.

The guarantee covers the purchase value of the bull, without interest, cost and damages. The guarantee shall apply providing the bull's incapacity is not caused by injury or disease contracted since leaving the sale. A veterinary certificate must be supplied by the purchaser on request.

If any bull that is purchased does not possess a reasonable fertility, although not totally infertile, any dispute that may arise will be settled by an arbitrator appointed by the auctioneers and must be lodged within 6 calendar months from date of sale.

We recommend that all purchasers discuss injury insurance of their bulls at the sale with Elders Ltd or their Agent. This guarantee is in addition to the normal terms and conditions governing auction sales.

HEALTH TREATMENTS

All the sale bulls have been tested negative to Pestivirus and have been vaccinated for ticks and Vibriosis prior to sale, allowing access to Qld.

We recommend annual boosters be given to all bulls. All of our bulls receive 5-in-1 vaccinations at three-months of age, six weeks later and a booster as a yearling. All animals are drenched at weaning and periodically according to worm counts. Minnamurra has J Bas 7 Johnes status.

VET CHECK

All Minnamurra bulls were examined by Dr Chris Hallet prior to sale day which included palpation of the sexual anatomy, semen testing, sperm morphology and pestivirus DNA testing, as well as physical examination of their structure and feet. Some of the 'R' bulls were used in a 6 week joining period over commercial heifers in Nov/Dec last year.

Stress, transport and nutritional changes can affect a bull's semen cycle for up to 70 days. If you move your bull to a completely different environment, we strongly recommend you do your own fertility examination prior to use. Similar precautions should be exercised prior to drawing a bull.

FREIGHT

All bulls must be transported from Mount Mill by sundown Sunday. **Minnamurra will personally deliver bulls to buyers whose properties lie within a 150km radius of Mount Mill free of charge.** Formal possession, risk and expenses passes to the buyer at the fall of the hammer. Minnamurra can arrange transport through, and recommends, Dick Smith Transport.

For interstate buyers, Minnamurra will arrange and cover freight costs as far as the Qld, Vic or SA border

Contact Steven Smith on 02 6882 2463 or mobile 0428 636 236.

FEED REGIME

All the bulls were reared on improved green pastures and hay from birth. For the last three months they have been fed on a ration of 20% barley/wheat straw and molassis.

SCAN DATA & EBV's

All bulls were scanned on 19th May, and their data submitted to Breedplan for EBV determination. They will be scanned again two weeks prior to the sale and the raw data will be available on the supplementary sheet on sale day, including scan data for the unregistered bulls.

NB: EBVs in the top 10% or better of the Speckle breed are highlighted with green shading; EBVs above the breed average (B.Av) are highlighted in red.

GENETIC TESTING

All purebred bulls in this catalogue have been DNA verified for parentage except for two bulls. (These have been marked in the catalogue as unregistered and are being sold as commercial bulls only). All purebred animals have been tested for poll, coat and myostatin. Bulls have also been tested for Leptin (tenderness). Results are recorded against each animal as follows:

DNA TEST DATA:

Key codes to the DNA tests shown against each lot in the catalogue are as follows:

P:C	Carries one horn gene
P:F	Free of the horn gene
P:-	Not tested
R:C	Carries one red gene
R:F	Free of the red gene
R:N	No result returned
M:C	Carries one myostatin gene
M:F	Free of the myostatin gene
L: C/C	Unmutated leptin genes
L: C/T	One mutated leptin gene
L: T/T	Two mutated leptin genes

SEMEN RIGHTS

Minnamurra retains the semen rights for in-herd use only in a number of bulls in this catalogue, as noted under the lot number. If the right to collect semen is exercised, Minnamurra will consult with the new owner of the bull to arrange a convenient time for collection, with the cost of collection being paid for by Minnamurra.

PRE SALE INSPECTION

Bulls will be available for inspection from 8am on the morning of the sale. They will be moved into the sale arena and yarded at 11am. Inspections are welcome at other times by arrangement.

SUPPLEMENTARY SHEET

Updated weights, scans or any other new or relevant information will be available on sale day.

CATERING

Morning tea and lunch will be provided at the sale.

MOBILE RECEPTION

Optus service is good, but Telstra service is patchy. Wi-Fi will be available in the sales arena, so Telstra phones can be used if Wi-Fi calling is activated.

NO VERBAL INSTRUCTIONS

Please fill out the buyer's instruction sheet available on sale day from the office.

AGENT'S REBATE

A 2% rebate will be paid to all settling agents who accompany their clients on sale day or who introduce their clients in writing by fax or email at least 24 hours prior to the sale to Elders Tamworth (contacts@elders.com.au).

GST

Bulls will be sold GST exclusive i.e. If the bull is knocked down for \$5,000, you will be charged \$5,500.

The sale is interfaced with AuctionsPlus and will be conducted live on line in real time. For those not able to attend the sale, new users must register 24 hours prior to the sale in order to bid. Full instructions are on the AuctionsPlus website. Note that transport must be organised sale day.

PRE-REGISTRATION

We are encouraging all buyers to please register online before sale day by scanning the QR code below. Please collect your bidder number from the Elders sale office at Mount Mill on sale day prior to Auction.

Note that pre-registrations will close the day before the sale at 5pm - 1/09/2022. However, registrations will still be available on sale day.



Scan to Register

For further information contact:

Nathan McConnell 0429 653 901
 Nathan.McConnell@elders.com.au
 www.auctionsplus.com.au

SELLING AGENTS



Elders Tamworth :-

- Settling Agents.....02 6765 3900
- Nathan McConnell0429 653 901
- Brian Kennedy0427 844 047
- Paul Jameson0428 667 998
- Nik Hannaford0417 201 460
- Shane Rule.....0427 456 878
- Lincoln McKinlay0419 239 963

AUCTIONEER

- Paul Dooley 0458 662 646

LIVESTOCK CONSULTANT

- Andrew Hosken0429 657 765

SETTLING YOUR BULLS IN

We strongly recommend that you have some other cattle in the yards to welcome your new addition. All our bulls have been running in their contemporary groups since birth, so it can be quite distressing for them to be left in a yard by themselves after being trucked. We can assure you that our bulls are handled extensively with low stress practices prior to sale - everything from vaccinations, being washed 3 times (photos, videos and pre-sale), fertility testing, scanning, branding, etc. Also, when cataloguing, we put each bull by himself to ensure his temperament is sound. Despite this we still find that the odd bull will fire up when he reaches his new home. There is a subtle difference between a bull that is frightened and trying to defend himself, and one that is straight out aggressive. Despite our best efforts to deliver you a nice quite bull, we still have the odd one that doesn't want to play the game. If this does happen, we are truly sorry, but please don't hesitate to get in touch with us so we can resolve the problem.

Note that yearling bulls i.e., our 'S' bulls, should be depastured with no more than 20 cows for their first joining, until they have fully matured.

Please bring this Catalogue to the Sale

DISCLAIMER: Minnamurra Pastoral Company, the selling agents, officers, agents and employees, while exercising due care, provide all information without responsibility and do not warrant its accuracy. They also accept no responsibility for accidents that occur on or about the venue. You attend the venue and the sale at your own risk.

REFERENCE SIRE:

JSF REDNECK WHISKEY 4B

Whiskey was sashed Junior Champion at Agribition in 2015, where we purchased a major share in him with Johner Stock Farm in Canada, and are delighted with his progeny. He is putting a beautiful head and shoulders on all his calves, while under the skin the marbling and eye muscle development is extraordinary. This bull is doing great things for the breed.

REDNECK WILD WILLY 2W

SIRE: REDNECK FERDINAND 14Y

REDNECK REDNECK U ALMOST FROZE

REDNECK REDNECK TEDDY 5T

DAM: REDNECK WHISKEY 7W

REDNECK REDNECK SCARLET 1S



	GL	BW	200	400	600	MCW	Milk	SS	CWT	EMA	RIB	RUMP	RBY	IMF
EBV	-2.4	-0.1	+12	+27	+23	+24	+3	+0.8	+8	-0.1	+4.6	+6.5	-4.1	+1.0
ACC	87%	96%	94%	94%	94%	82%	77%	94%	84%	74%	84%	84%	83%	79%

RIVER HILL CRUSADER 025C

Crusader was the standout bull at the 2016 Summit 3 Sale in Canada and the highest priced Speckle bull at the time. He is a well-muscled and well covered bull with great carcass attributes. We have had no calving problems with Crusader so far and his bulls have plenty of length. He is breeding good females, so we have great hopes for this sire. This is the first year his sons are offered for sale in Australia.

P.A.R. MOO FASSA 03M

SIRE: RIVER HILL TOUCHDOWN 50T

PRAIRIE HILL NABOB 50N

RIVER HILL TRAFFIC JAM 26T

DAM: RIVER HILL ALYNDA 025A

PURA VIDA YORBALINDA 25Y



	GL	BW	200	400	600	MCW	Milk	SS	CWT	EMA	RIB	RUMP	RBY	IMF
EBV	+0.3	+0.9	+18	+27	+35	+25	+4	+0.1	+23	+1.4	-0.3	-0.5	+0.2	+0.1
ACC	76%	89%	85%	84%	81%	65%	34%	83%	70%	58%	69%	69%	67%	60%

DOUBLE S JSF RAWHIDE 260D

One of the newer sires in the Minnamurra stable, Rawhide is maturing into great bull, similar to Whiskey. His calves that have dropped so far are low birth weight and easy out. We are very excited about this bull.

P.A.R. LITTLE TNT 88W

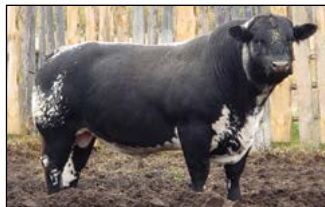
SIRE: P.A.R. ASCAPE 89A

P.A.R. MONALISA 89X

UNEEDA WONDERBAR 05W

DAM: UNEEDA YASEMIN 260Y

UNEEDA UNA 60U



	GL	BW	200	400	600	MCW	Milk	SS	CWT	EMA	RIB	RUMP	RBY	IMF
EBV	+0.7	+1.4	+11	+15	+9	-2	+0	-1.0	+11	+1.2	+0.5	+0.5	+0.2	+0.0
ACC	78%	91%	89%	87%	86%	69%	0%	86%	73%	59%	73%	73%	71%	66%

JOHNER STOCK FARM UNMARKED 2D

Unmarked is a real meat machine and is constantly producing top class females and bulls with the same quiet temperament. His owner David Johner, Johner Stock Farms Canada, describes him as the most complete bull he has seen in the breed. We have used him extensively over our white females the last two years to introduce more speckled coats into our herd.

A & W 15R

SIRE: HS UNTAPPED 3A

NOTTA PRETENDER 4T

UPTO SPECS ULYSSES 25U

DAM: JENCREST YAVONNA 6Y

P.A.R. RITA OF 14R



	GL	BW	200	400	600	MCW	Milk	SS	CWT	EMA	RIB	RUMP	RBV	IMF
EBV	+2.4	+1.3	+10	+19	+23	+20	-1	+0.7	+16	+1.4	+1.3	+1.8	-0.7	+0.3
ACC	76%	93%	88%	87%	85%	70%	42%	85%	74%	61%	73%	72%	70%	65%

JACKUNGAH NATE N08

Nate is a true JSF Trade Secret son, a very thick, long, moderate framed bull with a good temperament, chosen as a cover bull for our AI program. Trade Secret has proven himself all around the world and we are please to have this exceptional son in our program.

REDNECK YOGI GOES REDNECK

SIRE: JOHNER STOCK FARM TRADE SECRET 11A

MONNERY RIVER 7W

HWY.4 SPECKLE PARK 2H

DAM: WATTLE GROVE SPARKLE E3I

CODIAK PRAIRIE FIRE 01J



	GL	BW	200	400	600	MCW	Milk	SS	CWT	EMA	RIB	RUMP	RBV	IMF
EBV	-2.7	+0.1	+11	+23	+26	+31	+1	+1.4	+16	-0.1	+0.7	+1.0	-0.6	+0.1
ACC	60%	85%	83%	82%	81%	67%	41%	82%	70%	58%	69%	69%	67%	61%

JAD NOSEY JACK N13

Nosey Jack was bought as a cover bull, but we couldn't be happier with the way he has grown out into a big, large framed Lacerta bull, with length, depth and a great temperament. A very handy addition to our stable of sires that we intend to use extensively.

SPOTS 'N SPROUTS JUNO 103J

SIRE: STAR BANK LACERTA 68L

STAR BANK 55H

RIVER HILL TRAFFIC JAM 26T

DAM: RIVER HILL 26T WHISTLER 38W

RIVER HILL TEASHER 38T



	GL	BW	200	400	600	MCW	Milk	SS	CWT	EMA	RIB	RUMP	RBV	IMF
EBV	+0.7	+3.2	+25	+42	+51	+41	+5	+0.5	+33	+2.1	-1.2	-1.6	+1.2	-0.3
ACC	61%	82%	78%	76%	76%	66%	54%	77%	68%	57%	65%	65%	62%	56%

SIX STAR ROYAL FLESH 101Y

His sons and daughters won 7 out of the 14 awards at Agribition in 2017, including Grand Champion Female. They exhibit extra growth compared to other sires, with high IMF and EMA scores, and his daughters have great udders and milk flow. His legs and feet are structurally perfect and has good testicular development. A leading sire in the Speckle Park breed.

SPOTS 'N SPROUTS NEFROM 101N

SIRE: STAR BANK KING GEORGE 82U

STAR BANK 11H

STAR BANK 58L

DAM: STAR BANK 53R

STAR BANK 9E



	GL	BW	200	400	600	MCW	Milk	SS	CWT	EMA	RIB	RUMP	RBY	IMF
EBV	+2.6	+7.1	+31	+42	+60	+65	+1	+1.2	+29	+1.3	-0.8	-1.2	+1.0	+0.1
ACC	81%	95%	92%	91%	90%	81%	84%	87%	82%	71%	82%	82%	80%	76%

JACKUNGAH MONEY MAKER M07

Money Maker was bought as a cover bull for our AI program, and has grown into a big, large framed Eldorado bull, with length, depth and a great temperament. We are now using him as a regular paddock bull with his own cows, outside of the AI program.

HWY.4 SPECKLE PARK 2H

SIRE: MAINSTREAM ELDORADO E11

SPOTS 'N SPROUTS 3K

RIVERINA 82U ROMNEY G306

DAM: JACKUNGAH KODA K01

SIX STAR 50S EILEEN D102

	GL	BW	200	400	600	MCW	Milk	SS	CWT	EMA	RIB	RUMP	RBY	IMF
EBV	+1.3	+3.5	+15	+21	+38	+41	+5	-1.1	+19	+1.3	-0.1	-0.2	+0.5	+0.2
ACC	54%	76%	73%	70%	71%	59%	47%	68%	61%	49%	59%	59%	56%	52%

BLACK DIAMOND NORTH POLE N81

North Pole was used as a cover bull in our AI program and we have been very impressed with the bulls he has produced so far. Unfortunately he injured himself last year and had to be put down, but we still we retain 5 of his heifers in our herd.

ALMARLEA E6 KINGSLEY

SIRE: DINGO CREEK KNOCKOUT

DINGO CREEK FINESSE

RIVER HILL SAMSON 25S

DAM: WARATAH KATE J143

WARATAH KATE G22

	GL	BW	200	400	600	MCW	Milk	SS	CWT	EMA	RIB	RUMP	RBY	IMF
EBV	-0.9	+2.5	+29	+36	+44	+37	+9	+0.7	+29	+1.4	-0.9	-1.2	+1.1	-0.5
ACC	48%	81%	71%	67%	69%	55%	30%	52%	52%	35%	49%	49%	45%	43%

EBV PERCENTILES

Speckle Park - Percentile EBV Bands for 2020 Born Calves

Percentile Band	Gestation Length (days)	Birth Wt (kg)	200 Day Wt (kg)	400 Day Wt (kg)	600 Day Wt (kg)	Mat Cow Wt (kg)	Milk (kg)	Scrotal Size (cm)	Carcass Wt (kg)	Eye Muscle Area (sq cm)	Rib Fat (mm)	Rump Fat (mm)	Retail Beef Yield (%)	IMF (%)
Top Value	-3.6	-3.2	41	57	73	80	10	2.4	45	2.8	4.4	6.1	2.3	1.7
Top 1%	-2.6	-1.3	30	44	59	66	9	1.5	36	2	2.3	3.1	1.4	1.3
Top 5%	-1.4	-0.2	26	38	51	57	7	1	31	1.7	1.2	1.7	1	0.6
Top 10%	-1	0.3	23	35	47	51	6	0.8	28	1.4	0.9	1.2	0.9	0.4
Top 15%	-0.7	0.6	21	32	44	47	6	0.7	26	1.3	0.7	0.9	0.7	0.4
Top 20%	-0.5	0.8	20	30	41	44	5	0.7	25	1.2	0.6	0.7	0.6	0.3
Top 25%	-0.4	1	19	29	39	42	5	0.6	24	1.1	0.5	0.6	0.5	0.3
Top 30%	-0.3	1.1	18	28	38	39	5	0.6	22	1	0.4	0.5	0.4	0.2
Top 35%	-0.1	1.3	17	26	36	37	5	0.5	21	0.9	0.3	0.3	0.3	0.1
Top 40%	0	1.4	16	25	34	36	4	0.5	20	0.9	0.2	0.2	0.3	0.1
Top 45%	0.1	1.5	15	24	33	34	4	0.4	19	0.8	0.1	0.1	0.2	0.1
Top 50%	0.2	1.6	15	23	31	32	4	0.4	19	0.7	0	0	0.1	0
Top 55%	0.3	1.8	14	22	30	30	4	0.3	18	0.7	-0.1	-0.1	0	0
Top 60%	0.4	1.9	13	21	29	29	3	0.3	17	0.6	-0.1	-0.2	0	0
Top 65%	0.5	2.1	12	20	27	27	3	0.2	16	0.5	-0.2	-0.3	-0.1	-0.1
Top 70%	0.6	2.2	12	19	26	25	3	0.2	15	0.4	-0.3	-0.5	-0.2	-0.1
Top 75%	0.7	2.4	11	18	24	24	3	0.1	14	0.4	-0.4	-0.6	-0.3	-0.2
Top 80%	0.8	2.7	10	16	22	22	2	0.1	13	0.3	-0.5	-0.8	-0.4	-0.2
Top 85%	1	3	9	15	20	19	2	0	12	0.1	-0.7	-0.9	-0.6	-0.3
Top 90%	1.2	3.3	8	13	18	16	1	-0.1	10	0	-0.8	-1.1	-0.8	-0.4
Top 95%	1.4	3.8	5	10	14	11	1	-0.3	8	-0.2	-1	-1.5	-1.2	-0.5
Top 99%	2	4.7	1	3	4	-1	-1	-0.7	3	-0.6	-1.4	-2	-1.8	-0.8
Low Value	3.5	6.6	-15	-10	-19	-30	-4	-2.9	-7	-1.2	-2.4	-3.3	-3.3	-1.3

DNA Sampling Simplified

TSU, paired to matching NLIS and Management tags, creating an absolute sample-to-animal linkage!

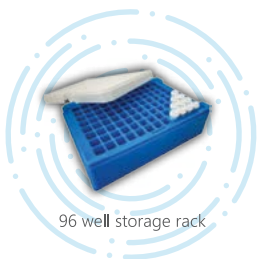


Allflex Livestock Intelligence

Tissue Sampling Unit (TSU)

- Clean, uncontaminated testing, yielding excellent lab results.
- Easy-to-use; collect samples in seconds with a single-squeeze motion.

96-vial well plate protects samples and is compatible with testing laboratories systems.



96 well storage rack

Also available in bulk packs!



Bulk pack (100)



Questions: Call Wal White
Area Sales Manager, Central NSW
0438 560 272 or contact@allflex.com.au



Livestock Intelligence™



LOT 1 MINNAMURRA RESOLUTE R77 (AI)

RIVER HILL TOUCHDOWN 50T	BORN:	5/9/2020
SIRE: RIVER HILL CRUSADER 025C	COLOUR:	Leopard
RIVER HILL ALYNDA 025A	IDENTIFIER:	MPC R77
	DNA TESTS:	P:F R:F M:F L:C/C
SPOTS 'N SPROUTS STANDS ALONE 300X		
DAM: MINNAMURRA 300X LIGHTNING LADY L26		
SIX STAR LIGHTNING LADY E204	\$	_____

July 2022 Speckle Park Group Breedplan

Calving Ease		Growth & Maternal						Fertility		Carcase					
	GL	BW	200	400	600	MCW	Milk	SS	CWT	EMA	RIB	RUMP	RBY	IMF	
EBV	+0.8	+0.9	+13	+20	+34	+28	+5	+0.2	+19	+1.1	-0.6	-0.9	+0.3	+0.1	
ACC	63%	75%	73%	71%	72%	59%	36%	74%	60%	49%	57%	57%	54%	46%	
B.Av	+0.1	+1.7	+15	+23	+32	+33	+4	+0.4	+19	+0.7	+0.1	+0.0	+0.1	+0.1	

The first of the Crusader sons to be offered in Australia. Resolute stands out for his overall balance softness and depth through the flank. A low birthweight, highly fertile bull who will breed a lot of diversity into your breeding program.



LOT 2 MINNAMURRA REGAL R69

SIRE: BLACK DIAMOND NORTH POLE N81
 DINGO CREEK KNOCKOUT
 WARATAH KATE J143
 SPOTS 'N SPROUTS STANDS ALONE 300X
DAM: MINNAMURRA 300X LIGHTNING LADY L33
 SIX STAR LIGHTNING LADY E204

BORN: 22/9/2020
 COLOUR: White
 IDENTIFIER: MPC R69
 DNA TESTS: P:F R:F M:C L:C/T

\$ _____

July 2022 Speckle Park Group Breedplan

Calving Ease		Growth & Maternal						Fertility			Carcase				
	GL	BW	200	400	600	MCW	Milk	SS	CWT	EMA	RIB	RUMP	RBY	IMF	
EBV	-0.1	+4.0	+34	+44	+63	+64	+7	+0.8	+38	+1.8	-1.5	-2.0	+1.7	-0.5	
ACC	45%	74%	69%	67%	69%	56%	34%	70%	56%	44%	52%	52%	49%	41%	
B.Av	+0.1	+1.7	+15	+23	+32	+33	+4	+0.4	+19	+0.7	+0.1	+0.0	+0.1	+0.1	

Regal displays tremendous weight for age, yield, and depth in the one package. Rare to find a bull with this much muscle and carry it so efficiently. An exciting genetic package with an excellent nature.



LOT 3 MINNAMURRA RONAN R39

JOHNER STOCK FARM TRADE SECRET 11A	BORN:	31/3/2020
SIRE: JACKUNGAH NATE N08	COLOUR:	Leopard
WATTLE GROVE SPARKLE E31	IDENTIFIER:	MPC R39
REDNECK JSF WHISKEY 4B	DNA TESTS:	P:F R:F M:F L:C/T
DAM: MINNAMURRA 4B UNIQUE N111		
MINNAMURRA 300X UNIQUE J8	\$	_____

July 2022 Speckle Park Group Breedplan

	Calving Ease		Growth & Maternal					Fertility		Carcase				
	GL	BW	200	400	600	MCW	Milk	SS	CWT	EMA	RIB	RUMP	RBY	IMF
EBV	-1.3	+1.3	+11	+26	+32	+39	-1	+1.4	+13	-0.2	+1.9	+2.6	-1.9	+0.4
ACC	49%	74%	71%	69%	66%	53%	36%	73%	58%	49%	57%	57%	55%	48%
B.Av	+0.1	+1.7	+15	+23	+32	+33	+4	+0.4	+19	+0.7	+0.1	+0.0	+0.1	+0.1

A long bodied, soft easy doing bull with a beautifully laid in shoulder. Ronan will breed excellent replacement females and diversity of markets with his extra growth and length.



LOT 4 MINNAMURRA REPUBLIC R73 (AI)

P.A.R. ASCAPE 89A
SIRE: DOUBLE S JSF RAWHIDE 260D
 UNEEDA YASEMIN 260Y

BORN: 8/8/2020
 COLOUR: Speckled
 IDENTIFIER: MPC R73
 DNA TESTS: P:F R:F M:F
 L:C/T

CODIAK OH MY GOSH 60A
DAM: MINNAMURRA 60A BELINDA P56
 CODIAK BELINDA 66A

\$ _____

July 2022 Speckle Park Group Breedplan

Calving Ease		Growth & Maternal						Fertility		Carcase				
	GL	BW	200	400	600	MCW	Milk	SS	CWT	EMA	RIB	RUMP	RBY	IMF
EBV	+1.0	+3.8	+17	+21	+29	+26	+1	-0.8	+11	+0.7	+0.7	+0.9	-0.3	+0.1
ACC	62%	75%	74%	71%	72%	58%	29%	74%	60%	48%	57%	57%	54%	47%
B.Av	+0.1	+1.7	+15	+23	+32	+33	+4	+0.4	+19	+0.7	+0.1	+0.0	+0.1	+0.1

A typical Rawhide with his correctness and ability to stand square with his head above his spine every time. An eye-catching sire, stylish and with a lot of sire appeal.



LOT 5 MINNAMURRA RAVEN R67 (AI)

P.A.R. ASCAPE 89A
SIRE: DOUBLE S JSF RAWHIDE 260D
 UNEDA YASEMIN 260Y
 WATTLE GROVE PROJECT A L264
DAM: MINNAMURRA L264 TEEKA P114
 MINNAMURRA 82U TEEKA J46

BORN: 14/8/2020
 COLOUR: Black
 IDENTIFIER: MPC R67
 DNA TESTS: P:F R:F M:C
 L:C/C

\$ _____

July 2022 Speckle Park Group Breedplan

Calving Ease		Growth & Maternal						Fertility		Carcase				
	GL	BW	200	400	600	MCW	Milk	SS	CWT	EMA	RIB	RUMP	RBY	IMF
EBV	+0.9	+3.2	+19	+34	+43	+46	+2	+0.8	+26	+1.8	+0.4	+0.5	+0.4	-0.1
ACC	61%	75%	73%	70%	71%	57%	28%	73%	59%	47%	55%	55%	52%	45%
B.Av	+0.1	+1.7	+15	+23	+32	+33	+4	+0.4	+19	+0.7	+0.1	+0.0	+0.1	+0.1

One of the best weight-for-age bulls to be catalogued. Rare to see a bull combine softness, growth, and yield in the one package. Lot 5 displays tremendous width along the spine and fills all the way to behind the shoulder. Scanned at the top of his contemporary group for both EMA and fats.



LOT 6 MINNAMURRA RADIANT R66 (AI)

SIRE: RIVER HILL CRUSADER 025C	RIVER HILL TOUCHDOWN 50T	BORN:	8/9/2020
	RIVER HILL ALYNDA 025A	COLOUR:	Speckled
	SPOTS 'N SPROUTS STANDS ALONE 300X	IDENTIFIER:	MPC R66
DAM: MINNAMURRA 300X JANETTE J23		DNA TESTS:	P:F R:C M:C L:C/T
	P.A.R. JANETTE 44H		\$ _____

July 2022 Speckle Park Group Breedplan

Calving Ease		Growth & Maternal						Fertility		Carcase				
	GL	BW	200	400	600	MCW	Milk	SS	CWT	EMA	RIB	RUMP	RBV	IMF
EBV	+0.5	+4.4	+33	+49	+69	+70	+5	+0.8	+39	+1.7	-1.1	-1.6	+1.0	-0.2
ACC	64%	76%	74%	72%	72%	60%	41%	75%	62%	51%	59%	59%	56%	49%
B.Av	+0.1	+1.7	+15	+23	+32	+33	+4	+0.4	+19	+0.7	+0.1	+0.0	+0.1	+0.1

Radiant is a bigger framed, heavy bull with excellent growth data. A sirey, proud and neat shouldered bull that will catch your eye in this pen. A Crusader bull, carrying an extra degree of carcase expression.



LOT 7 MINNAMURRA RAMROD R59

DINGO CREEK KNOCKOUT
SIRE: BLACK DIAMOND NORTH POLE N81
 WARATAH KATE J143
 SPOTS 'N SPROUTS STANDS ALONE 300X
DAM: MINNAMURRA 300X TERESSA J78
 CODIAK TERESSA 12T

BORN: 7/9/2020
 COLOUR: White
 IDENTIFIER: MPC R59
 DNA TESTS: P:F R:F M:F L:C/T

\$ _____

July 2022 Speckle Park Group Breedplan

	Calving Ease		Growth & Maternal					Fertility		Carcase				
	GL	BW	200	400	600	MCW	Milk	SS	CWT	EMA	RIB	RUMP	RBY	IMF
EBV	-1.5	-0.4	+15	+27	+27	+19	+9	+0.4	+23	+1.0	-0.5	-0.6	+0.5	-0.3
ACC	46%	73%	69%	67%	69%	57%	37%	71%	57%	46%	56%	55%	52%	44%
B.Av	+0.1	+1.7	+15	+23	+32	+33	+4	+0.4	+19	+0.7	+0.1	+0.0	+0.1	+0.1

A very soft low birthweight easy doing bull who would live on the smell of an oily rag! A smooth muscled bull with good width along the spine. Well suited to a self-replacing herd with diversity of markets. Also suitable for heifers.



LOT 8 MINNAMURRA RAZOR R64 (AI)

SIRE: RIVER HILL CRUSADER 025C	RIVER HILL TOUCHDOWN 50T	BORN:	5/9/2020
	RIVER HILL ALYNDA 025A	COLOUR:	Speckled
	RIVER HILL STRIKER 50U	IDENTIFIER:	MPC R64
DAM: MINNAMURRA 50U UNIQUE J131		DNA TESTS:	P:C R:F M:F L:C/C
	CODIAK UNIQUE 8R		\$ _____

July 2022 Speckle Park Group Breedplan

	Calving Ease		Growth & Maternal					Fertility		Carcase				
	GL	BW	200	400	600	MCW	Milk	SS	CWT	EMA	RIB	RUMP	RBY	IMF
EBV	+1.1	+2.3	+17	+23	+38	+39	+2	+0.9	+18	+0.8	+0.7	+0.9	-0.8	+0.6
ACC	63%	75%	73%	71%	72%	59%	38%	74%	61%	51%	60%	60%	57%	49%
B.Av	+0.1	+1.7	+15	+23	+32	+33	+4	+0.4	+19	+0.7	+0.1	+0.0	+0.1	+0.1

An expressively muscled, deep hind-quartered bull with a lot of strength over the loin and top line. A sirey headed, strong hocked bull who stands proudly with his head above his spine. Astute judges will know this female line! One of the best in the breed.



LOT 9 MINNAMURRA REGENT R53

JOHNER STOCK FARM TRADE SECRET 11A	BORN:	17/8/2020
SIRE: JACKUNGAH NATE N08	COLOUR:	White
WATTLE GROVE SPARKLE E31	IDENTIFIER:	MPC R53
REDNECK JSF WHISKEY 4B	DNA TESTS:	P:C R:C M:F L:C/T
DAM: MINNAMURRA 4B TORI P79		
MINNAMURRA 300X TORI J113	\$	_____

July 2022 Speckle Park Group Breedplan

	Calving Ease		Growth & Maternal					Fertility		Carcase				
	GL	BW	200	400	600	MCW	Milk	SS	CWT	EMA	RIB	RUMP	RBY	IMF
EBV	-1.7	+1.6	+18	+31	+40	+45	+1	+1.6	+21	+0.1	+0.7	+1.0	-0.7	+0.1
ACC	49%	74%	71%	69%	70%	58%	36%	73%	60%	49%	56%	56%	54%	46%
B.Av	+0.1	+1.7	+15	+23	+32	+33	+4	+0.4	+19	+0.7	+0.1	+0.0	+0.1	+0.1

A soft doing, mid maturity bull who will grow on. A strong headed wide muzzled bull who carries that width right through to his hip and pins. A bull with well-developed testicles who will breed early sexual maturity into your replacement females.



LOT 10 MINNAMURRA ROVER R81

MAINSTREAM ELDORADO E11

SIRE: JACKUNGAH MONEY MAKER M07

JACKUNGAH KODA K01

SIX STAR ROYAL FLESH 101Y

DAM: MINNAMURRA 101Y JANETTE L70

SIX STAR 13U JANETTE G37

BORN: 25/9/2020

COLOUR: Black

IDENTIFIER: MPC R81

DNA TESTS: P:C R:F M:F
L:C/T

\$ _____

July 2022 Speckle Park Group Breedplan

	Calving Ease		Growth & Maternal					Fertility		Carcase				
	GL	BW	200	400	600	MCW	Milk	SS	CWT	EMA	RIB	RUMP	RBV	IMF
EBV	+2.7	+6.6	+25	+34	+56	+64	+1	+1.2	+25	+1.5	-0.6	-0.9	+1.0	+0.1
ACC	47%	73%	69%	68%	69%	57%	39%	71%	58%	47%	57%	57%	54%	46%
B.Av	+0.1	+1.7	+15	+23	+32	+33	+4	+0.4	+19	+0.7	+0.1	+0.0	+0.1	+0.1

A long bodied, stylish fronted bull with good length from hip to pin and rein of neck. Lot 10 will breed beautiful replacement females and add some real weight for age at the same time.



LOT 11 MINNAMURRA RAMBLER R57 (AI)

P.A.R. ASCAPE 89A	BORN:	7/8/2020
SIRE: DOUBLE S JSF RAWHIDE 260D	COLOUR:	Speckled
UNEEEDA YASEMIN 260Y	IDENTIFIER:	MPC R57
REDNECK JSF WHISKEY 4B	DNA TESTS:	P:F R:F M:F L:C/T
DAM: MINNAMURRA 4B JANETTE P64		
MINNAMURRA 300X JANETTE J22	\$	_____

July 2022 Speckle Park Group Breedplan

Calving Ease		Growth & Maternal						Fertility		Carcase					
	GL	BW	200	400	600	MCW	Milk	SS	CWT	EMA	RIB	RUMP	RBY	IMF	
EBV	-1.2	+1.1	+17	+30	+26	+21	+7	+0.3	+19	+0.1	+0.4	+0.6	-0.5	+0.0	
ACC	62%	74%	73%	71%	72%	58%	30%	74%	60%	49%	57%	57%	54%	47%	
B.Av	+0.1	+1.7	+15	+23	+32	+33	+4	+0.4	+19	+0.7	+0.1	+0.0	+0.1	+0.1	

A standout bull in this pen with an excellent combination of genetics. Rambler is as long as a coal train, slick coated for Northern Australia and with excellent fertility data.



LOT 12 MINNAMURRA RAGAMUFFIN R54 (AI)

P.A.R. ASCAPE 89A	BORN:	4/8/2020
SIRE: DOUBLE S JSF RAWHIDE 260D	COLOUR:	Speckled
UNEEDA YASEMIN 260Y	IDENTIFIER:	MPC R54
MINNAMURRA JAGUAR J156	DNA TESTS:	P:F R:F M:F L:C/C
DAM: MINNAMURRA J156 PRAIRIE FIRE P121		
MINNAMURRA 6Z PRAIRIE FIRE L118	\$	_____

July 2022 Speckle Park Group Breedplan

Calving Ease		Growth & Maternal						Fertility		Carcase				
	GL	BW	200	400	600	MCW	Milk	SS	CWT	EMA	RIB	RUMP	RBY	IMF
EBV	+0.8	+2.0	+13	+15	+19	+24	+0	+0.2	+10	+0.5	+2.3	+3.1	-1.4	+0.6
ACC	52%	75%	72%	70%	71%	58%	29%	73%	60%	48%	56%	56%	53%	46%
B.Av	+0.1	+1.7	+15	+23	+32	+33	+4	+0.4	+19	+0.7	+0.1	+0.0	+0.1	+0.1

An expressively muscled, deep hind-quartered Rawhide son, who is really sailing along at the moment. A deep barrelled bull with good heart room and depth of twist, this is where he gets his extra weight for age from.



LOT 13 MINNAMURRA RATCHET R63 (AI)

P.A.R. ASCAPE 89A	BORN:	30/8/2020
SIRE: DOUBLE S JSF RAWHIDE 260D	COLOUR:	Speckled
UNEEEDA YASEMIN 260Y	IDENTIFIER:	MPC R63
RIVER HILL WALKER 60W	DNA TESTS:	P:F R:F M:F L:C/C
DAM: MINNAMURRA 60W PASSION STAR L25		
STYALS PASSION STAR 15P	\$	_____

July 2022 Speckle Park Group Breedplan

	Calving Ease		Growth & Maternal					Fertility		Carcase				
	GL	BW	200	400	600	MCW	Milk	SS	CWT	EMA	RIB	RUMP	RBY	IMF
EBV	-0.4	-0.4	+6	+10	+7	-3	+3	-0.8	+8	+0.6	+0.5	+0.6	-0.3	+0.0
ACC	63%	75%	74%	71%	72%	59%	33%	74%	61%	48%	57%	57%	54%	47%
B.Av	+0.1	+1.7	+15	+23	+32	+33	+4	+0.4	+19	+0.7	+0.1	+0.0	+0.1	+0.1

A low birthweight, smooth shouldered, very quiet sire with tremendous length of body. A bull well suited to both mature cows and heifers.



LOT 14 MINNAMURRA RAMPAGE R58 (AI)

P.A.R. ASCAPE 89A
SIRE: DOUBLE S JSF RAWHIDE 260D
 UNEEDA YASEMIN 260Y
 MINNAMURRA JAGUAR J156
DAM: MINNAMURRA J156 TWO AH P123
 MINNAMURRA 15R TWO AH L22

BORN: 5/8/2020
 COLOUR: Speckled
 IDENTIFIER: MPC R58
 DNA TESTS: P:F R:F M:F
 L:C/T

\$ _____

July 2022 Speckle Park Group Breedplan

Calving Ease		Growth & Maternal						Fertility		Carcase				
	GL	BW	200	400	600	MCW	Milk	SS	CWT	EMA	RIB	RUMP	RBV	IMF
EBV	+0.7	+1.3	+11	+19	+19	+12	+4	-0.3	+14	+0.4	-0.3	-0.5	+0.3	-0.2
ACC	52%	75%	72%	69%	71%	58%	29%	73%	59%	47%	56%	55%	53%	46%
B.Av	+0.1	+1.7	+15	+23	+32	+33	+4	+0.4	+19	+0.7	+0.1	+0.0	+0.1	+0.1

A low birthweight bull with good slope from hip to pin and a nicely laid in shoulder. Lot 14 shows good expression of muscle through the lower leg and over the loin. A bull well suited to heifers.



LOT 15 MINNAMURRA REPULSE R74 (AI)

P.A.R. ASCAPE 89A	BORN:	10/9/2020
SIRE: DOUBLE S JSF RAWHIDE 260D	COLOUR:	Speckled
UNEEEDA YASEMIN 260Y	IDENTIFIER:	MPC R74
STAR BANK KING GEORGE 82U	DNA TESTS:	P:F R:F M:C L:C/C
DAM: MINNAMURRA 82U JANETTE L38		
NOTTA 50S JANETTE 5W	\$	_____

July 2022 Speckle Park Group Breedplan

	Calving Ease		Growth & Maternal					Fertility		Carcase				
	GL	BW	200	400	600	MCW	Milk	SS	CWT	EMA	RIB	RUMP	RBY	IMF
EBV	+1.6	+2.4	+15	+20	+28	+31	+2	+0.5	+18	+1.2	+0.7	+0.9	+0.2	-0.1
ACC	62%	75%	73%	71%	71%	58%	32%	73%	60%	48%	56%	56%	53%	47%
B.Av	+0.1	+1.7	+15	+23	+32	+33	+4	+0.4	+19	+0.7	+0.1	+0.0	+0.1	+0.1

A sirey headed, very deep bodied, soft easy doing bull. A bull that has been admired for his strength of loin and overall balance and soundness through the hock.



LOT 16 MINNAMURRA RANGER R60 (AI)

SIRE: RIVER HILL CRUSADER 025C	RIVER HILL TOUCHDOWN 50T	BORN:	3/9/2020
	RIVER HILL ALYNDA 025A	COLOUR:	Leopard
	SPOTS 'N SPROUTS STANDS ALONE 300X	IDENTIFIER:	MPC R60
DAM: MINNAMURRA 300X JANETTE L37		DNA TESTS:	P:F R:F M:F L:C/T
	NOTTA 50S JANETTE 5W		\$ _____

July 2022 Speckle Park Group Breedplan

	Calving Ease		Growth & Maternal					Fertility		Carcase				
	GL	BW	200	400	600	MCW	Milk	SS	CWT	EMA	RIB	RUMP	RBY	IMF
EBV	-0.5	-0.3	+12	+23	+33	+31	+3	+0.7	+23	+1.0	-0.6	-0.9	+0.5	-0.2
ACC	63%	75%	73%	70%	71%	58%	36%	73%	60%	49%	56%	56%	54%	46%
B.Av	+0.1	+1.7	+15	+23	+32	+33	+4	+0.4	+19	+0.7	+0.1	+0.0	+0.1	+0.1

A well grown, efficient moving bull who stands square with his head up. A softer muscled sire with good calving ease and a low birthweight.



LOT 17 MINNAMURRA RAPIER R61

SIRE: JACKUNGAH NATE N08
 JOHNER STOCK FARM TRADE SECRET 11A BORN: 27/8/2020
 WATTLE GROVE SPARKLE E31 COLOUR: Leopard
 CODIAK SO LONG GEORGE 6Z IDENTIFIER: MPC R61
 DNA TESTS: P:F R:C M:F L:T/T
DAM: MINNAMURRA 6Z UNIQUE P13
 MINNAMURRA 300X UNIQUE J8 \$ _____

July 2022 Speckle Park Group Breedplan

	Calving Ease		Growth & Maternal					Fertility		Carcase				
	GL	BW	200	400	600	MCW	Milk	SS	CWT	EMA	RIB	RUMP	RBY	IMF
EBV	-1.8	-0.3	+8	+14	+10	+11	+3	+0.7	+6	-0.8	+1.4	+1.8	-1.4	+0.4
ACC	48%	74%	71%	69%	70%	58%	37%	73%	59%	48%	56%	56%	53%	46%
B.Av	+0.1	+1.7	+15	+23	+32	+33	+4	+0.4	+19	+0.7	+0.1	+0.0	+0.1	+0.1

A moderate framed, neatly made bull with a lot of spring of rib and overall softness. A low birthweight sire well suited to cows and heifers. Top 10% for gestation length, birthweight, rib and rump fats.



LOT 18 MINNAMURRA REFLEX R68

SIRE: JACKUNGAH NATE N08
 JOHNER STOCK FARM TRADE SECRET 11A BORN: 31/8/2020
 WATTLE GROVE SPARKLE E31 COLOUR: Speckled
 IDENTIFIER: MPC R68
 MINNAMURRA JAGUAR J156 DNA TESTS: P:F R:F M:C L:C/T
DAM: MINNAMURRA J156 SILVER FOX P110
 MINNAMURRA 101Y SILVER FOX L55 \$ _____

July 2022 Speckle Park Group Breedplan

Calving Ease		Growth & Maternal						Fertility		Carcase				
	GL	BW	200	400	600	MCW	Milk	SS	CWT	EMA	RIB	RUMP	RBY	IMF
EBV	-1.1	+2.2	+21	+31	+38	+41	+3	+0.9	+23	+0.5	+0.2	+0.3	+0.1	+0.0
ACC	46%	74%	71%	69%	70%	57%	35%	72%	59%	48%	57%	57%	54%	47%
B.Av	+0.1	+1.7	+15	+23	+32	+33	+4	+0.4	+19	+0.7	+0.1	+0.0	+0.1	+0.1

A quiet-natured, mid-maturing bull who will suit a number of different markets. Lot 18 has a sirey outlook, a good strong head with very balanced figures.



LOT 19 MINNAMURRA REMINGTON R14

SIRE: JACKUNGAH NATE N08
 JOHNER STOCK FARM TRADE SECRET 11A BORN: 8/3/2020
 WATTLE GROVE SPARKLE E31 COLOUR: White
 IDENTIFIER: MPC R14
 REDNECK JSF WHISKEY 4B DNA TESTS: P:C R:F M:F
 L:C/T
DAM: MINNAMURRA 4B TORI N131
 MINNAMURRA 300X TORI J87 \$ _____

July 2022 Speckle Park Group Breedplan

	Calving Ease		Growth & Maternal					Fertility		Carcase				
	GL	BW	200	400	600	MCW	Milk	SS	CWT	EMA	RIB	RUMP	RBY	IMF
EBV	-1.9	+0.0	+9	+19	+22	+30	+1	+1.2	+11	-0.2	+2.3	+3.2	-2.0	+0.6
ACC	48%	74%	71%	69%	66%	53%	36%	73%	58%	49%	57%	57%	55%	48%
B.Av	+0.1	+1.7	+15	+23	+32	+33	+4	+0.4	+19	+0.7	+0.1	+0.0	+0.1	+0.1

A very long bodied bull with tremendous softness. Lot 19 will survive in any climatic conditions. One of the widest thurled bulls catalogued who carries that width right along his top line. A low birthweight bull suitable for heifers. Lot 19 has scurs.



LOT 20 MINNAMURRA REAPER R65

SIRE: JACKUNGAH NATE N08
 WATTLE GROVE SPARKLE E31
 MINNAMURRA JAGUAR J156
DAM: MINNAMURRA J156 TORI P108
 MINNAMURRA 6Z TORI L155

BORN: 17/9/2020
 COLOUR: White
 IDENTIFIER: MPC R65
 DNA TESTS: P:F R:C M:F
 L:T/T

\$ _____

July 2022 Speckle Park Group Breedplan

	Calving Ease		Growth & Maternal					Fertility		Carcase				
	GL	BW	200	400	600	MCW	Milk	SS	CWT	EMA	RIB	RUMP	RBV	IMF
EBV	-1.0	+1.3	+10	+14	+25	+35	-2	+1.0	+12	+0.2	+0.8	+1.1	-0.2	-0.1
ACC	47%	74%	71%	69%	70%	57%	35%	73%	59%	48%	56%	56%	53%	45%
B.Av	+0.1	+1.7	+15	+23	+32	+33	+4	+0.4	+19	+0.7	+0.1	+0.0	+0.1	+0.1

A bull displaying a lot of testicular development and short gestation. An earlier maturing, deep barrellled bull whose progeny you can turn off quickly. Well suited to the supermarket trade.



LOT 21 MINNAMURRA RILEY R24

STAR BANK LACERTA 68L	BORN:	10/4/2020
SIRE: JAD NOSEY JACK N13	COLOUR:	White
RIVER HILL 26T WHISTLER 38W	IDENTIFIER:	MPC R24
RIVER HILL STRIKER 50U	DNA TESTS:	P:F R:F M:F L:C/T
DAM: MINNAMURRA 50U UNIQUE J129		
CODIAK UNIQUE 8R	\$	_____

July 2022 Speckle Park Group Breedplan

	Calving Ease		Growth & Maternal					Fertility		Carcase				
	GL	BW	200	400	600	MCW	Milk	SS	CWT	EMA	RIB	RUMP	RBY	IMF
EBV	+0.4	+1.5	+15	+21	+28	+24	+5	-0.7	+19	+0.8	-0.3	-0.5	+0.3	+0.1
ACC	52%	75%	71%	70%	67%	55%	44%	74%	60%	52%	59%	59%	56%	49%
B.Av	+0.1	+1.7	+15	+23	+32	+33	+4	+0.4	+19	+0.7	+0.1	+0.0	+0.1	+0.1

A wide thurled, well-muscled bull with a lot of rein of neck and an excellent shoulder placement. Rare to see a bull carry this amount of muscle in such an efficient way. Suitable for heifers.



LOT 22 MINNAMURRA RAIDER R55

REDNECK JSF WHISKEY 4B
SIRE: MINNAMURRA NIGHTHAWK N112
 MINNAMURRA 300X UNIQUE J83
 CODIAK OH MY GOSH 60A
DAM: MINNAMURRA 60A HAYLEY P2
 SPOTS 'N SPROUTS 7W

BORN: 23/8/2020
 COLOUR: White
 IDENTIFIER: MPC R55
 DNA TESTS: P:F R:F M:F
 L:C/T

\$ _____

July 2022 Speckle Park Group Breedplan

Calving Ease		Growth & Maternal						Fertility		Carcase				
	GL	BW	200	400	600	MCW	Milk	SS	CWT	EMA	RIB	RUMP	RBY	IMF
EBV	-1.8	-1.4	+6	+11	+4	+0	+3	-0.4	+7	-0.1	+2.0	+2.8	-1.8	+0.6
ACC	49%	75%	72%	70%	71%	59%	38%	73%	60%	49%	57%	57%	54%	47%
B.Av	+0.1	+1.7	+15	+23	+32	+33	+4	+0.4	+19	+0.7	+0.1	+0.0	+0.1	+0.1

A deep bodied, good doing sire with tremendous muscle shape and heart room. Lot 22 will convert grass to meat in a very efficient way. A low birthweight bull suitable for heifers.



LOT 23 MINNAMURRA REMARKABLE R70

JOHNER STOCK FARM TRADE SECRET 11A	BORN:	27/9/2020
SIRE: JACKUNGAH NATE N08	COLOUR:	White
WATTLE GROVE SPARKLE E31	IDENTIFIER:	MPC R70
REDNECK JSF WHISKEY 4B	DNA TESTS:	P:F R:F M:F L:C/T
DAM: MINNAMURRA 4B TORI P41		
MINNAMURRA 15R TORI J26	\$	_____

July 2022 Speckle Park Group Breedplan

Calving Ease		Growth & Maternal					Fertility		Carcase					
	GL	BW	200	400	600	MCW	Milk	SS	CWT	EMA	RIB	RUMP	RBY	IMF
EBV	-1.1	-0.3	+1	+7	+8	+11	+0	+1.0	+1	-0.2	+2.4	+3.3	-2.0	+0.6
ACC	45%	69%	69%	68%	65%	52%	35%	52%	56%	38%	45%	45%	44%	41%
B.Av	+0.1	+1.7	+15	+23	+32	+33	+4	+0.4	+19	+0.7	+0.1	+0.0	+0.1	+0.1

A very quiet, good-natured bull with a smooth, soft muscle pattern. A smaller framed bull, well suited to the restaurant trade. Suitable for heifers.

YEARLING BULLS



LOT 24 MINNAMURRA SAMUEL S4 (AI)

SIRE: RIVER HILL CRUSADER 025C	RIVER HILL TOUCHDOWN 50T	BORN:	22/3/2021
	RIVER HILL ALYNDA 025A	COLOUR:	Leopard
	SIX STAR ROYAL FLESH 101Y	IDENTIFIER:	MPC S4
DAM: MINNAMURRA 101Y SILVER FOX L72		DNA TESTS:	P:F R:F M:C L:C/T
	SIX STAR 26T SILVER FOX F42		\$ _____

July 2022 Speckle Park Group Breedplan

	Calving Ease		Growth & Maternal					Fertility		Carcase				
	GL	BW	200	400	600	MCW	Milk	SS	CWT	EMA	RIB	RUMP	RBY	IMF
EBV	+0.4	+3.6	+27	+34	+43	+37	+6	-0.9	+27	+1.6	-0.4	-0.7	+0.7	+0.2
ACC	63%	75%	73%	71%	68%	53%	39%	73%	59%	49%	58%	58%	55%	47%
B.Av	+0.1	+1.7	+15	+23	+32	+33	+4	+0.4	+19	+0.7	+0.1	+0.0	+0.1	+0.1

One of the best weight-for-age bulls of the yearling contemporary group. A standout individual displaying good muscle expression through the stifle, but in a soft, smooth way. A very good-natured bull who will grow on into an impressive sire.

LOT 25 MINNAMURRA SHANE S31 (AI)

RIVER HILL TOUCHDOWN 50T BORN: 29/3/2021
SIRE: RIVER HILL CRUSADER 025C COLOUR: Leopard
 RIVER HILL ALYNDA 025A IDENTIFIER: MPC S31
 REDNECK JSF WHISKEY 4B DNA TESTS: P:F R:F M:F
 L:C/C
DAM: MINNAMURRA 4B JANETTE N91
 MINNAMURRA 300X JANETTE J22 \$ _____

July 2022 Speckle Park Group Breedplan

	Calving Ease		Growth & Maternal					Fertility		Carcase				
	GL	BW	200	400	600	MCW	Milk	SS	CWT	EMA	RIB	RUMP	RBV	IMF
EBV	-0.6	+0.0	+15	+23	+27	+21	+7	-0.1	+16	+0.0	+1.0	+1.5	-1.5	+0.4
ACC	64%	75%	73%	71%	68%	53%	35%	74%	59%	49%	58%	58%	55%	48%
B.Av	+0.1	+1.7	+15	+23	+32	+33	+4	+0.4	+19	+0.7	+0.1	+0.0	+0.1	+0.1

A beautiful walking, efficient moving bull who always stands square and proud. A low birthweight, good growth for age sire with curve bending data. Lot 25 will really catch your eye, a true sire in the making. Suitable for heifers. (Video available online).

LOT 26 MINNAMURRA SATURN S10

JOHNER STOCK FARM TRADE SECRET 11A BORN: 1/4/2021
SIRE: JACKUNGAH NATE N08 COLOUR: White
 WATTLE GROVE SPARKLE E31 IDENTIFIER: MPC S10
 SPOTS 'N SPROUTS STANDS ALONE 300X DNA TESTS: P:F R:C M:F
 L:C/T
DAM: MINNAMURRA 300X ALTHEA L43
 STAR BANK 53R \$ _____

July 2022 Speckle Park Group Breedplan

	Calving Ease		Growth & Maternal					Fertility		Carcase				
	GL	BW	200	400	600	MCW	Milk	SS	CWT	EMA	RIB	RUMP	RBV	IMF
EBV	-1.8	+0.9	+18	+37	+42	+44	+5	+0.3	+32	+0.9	-1.1	-1.5	+1.0	-0.3
ACC	49%	74%	71%	69%	66%	53%	39%	73%	59%	49%	56%	56%	54%	47%
B.Av	+0.1	+1.7	+15	+23	+32	+33	+4	+0.4	+19	+0.7	+0.1	+0.0	+0.1	+0.1

Saturn is clearly one of the stand-out lots of this year's catalogue. A young sire who will take your breeding program to another level. A very low birthweight bull with tremendous growth, yield and carcass potential. Lot 26 walks like a sire, so proud and efficient, with so much length of body like he has an extra rib. Suitable for heifers. MPC retains the right to collect 200 straws of semen at a future date. (Video available online).



LOT 27 MINNAMURRA SCHAEFFER S13 (AI)

RIVER HILL TOUCHDOWN 50T

SIRE: RIVER HILL CRUSADER 025C

RIVER HILL ALYNDA 025A

CODIAK SO LONG GEORGE 6Z

DAM: MINNAMURRA 6Z TORI N105

MINNAMURRA 15R TORI J26

BORN: 23/3/2021

COLOUR: Leopard

IDENTIFIER: MPC S13

DNA TESTS: P:F R:C M:C
L:C/C

\$ _____

July 2022 Speckle Park Group Breedplan

	Calving Ease		Growth & Maternal					Fertility		Carcase				
	GL	BW	200	400	600	MCW	Milk	SS	CWT	EMA	RIB	RUMP	RBY	IMF
EBV	+0.6	+2.6	+18	+21	+29	+31	+2	+0.8	+12	+0.4	+1.9	+2.6	-1.5	+0.5
ACC	62%	75%	73%	70%	67%	53%	36%	73%	58%	49%	57%	57%	54%	47%
B.Av	+0.1	+1.7	+15	+23	+32	+33	+4	+0.4	+19	+0.7	+0.1	+0.0	+0.1	+0.1

A balanced, correct Crusader son with a beautiful temperament and tremendous softness of body. A young sire that is very hard to fault with an extra degree of coverage. Lot 27 will grow on and thrive in all environmental conditions.



LOT 28 MINNAMURRA SCORPIO S15 (AI)

RIVER HILL TOUCHDOWN 50T
SIRE: RIVER HILL CRUSADER 025C
 RIVER HILL ALYNDA 025A
 SIX STAR ANCHOR E229
DAM: MINNAMURRA 6Z TORI L132
 MINNAMURRA 15R TORI J42

BORN: 5/5/2021
 COLOUR: White
 IDENTIFIER: MPC S15
 DNA TESTS: P:F R:F M:F
 L:C/T

UNREGISTERED

\$ _____

July 2022 Speckle Park Group Breedplan

Calving Ease			Growth & Maternal					Fertility		Carcase				
	GL	BW	200	400	600	MCW	Milk	SS	CWT	EMA	RIB	RUMP	RBY	IMF
EBV														
ACC														
B.Av	+0.1	+1.7	+15	+23	+32	+33	+4	+0.4	+19	+0.7	+0.1	+0.0	+0.1	+0.1

A deep flanked, heavy, strong hocked bull who walks with a lot of correctness. Lot 28 scanned very highly across all traits within his contemporary group. A young sire with the maturity pattern to suit all markets. We were unable to get a DNA match for his dam, so S15 is sold unregistered as a commercial bull.



LOT 29 MINNAMURRA SEBASTIAN S19 (AI)

SIRE: MAINSTREAM ELDORADO E11	BORN:	10/5/2021
JACKUNGAH MONEY MAKER M07	COLOUR:	White
JACKUNGAH KODA K01	IDENTIFIER:	MPC S19
CODIAK SO LONG GEORGE 6Z	DNA TESTS:	P:F R:F M:F L:C/C
DAM: MINNAMURRA 6Z UNIQUE L130		
MINNAMURRA 300X UNIQUE J83		

July 2022 Speckle Park Group Breedplan

	Calving Ease		Growth & Maternal					Fertility		Carcase				
	GL	BW	200	400	600	MCW	Milk	SS	CWT	EMA	RIB	RUMP	RBY	IMF
EBV	+1.0	+3.3	+19	+30	+42	+50	+6	-0.7	+24	+1.0	+1.2	+1.6	-0.6	+0.6
ACC	48%	68%	65%	63%	61%	50%	41%	65%	54%	45%	53%	53%	50%	45%
B.Av	+0.1	+1.7	+15	+23	+32	+33	+4	+0.4	+19	+0.7	+0.1	+0.0	+0.1	+0.1

A high growth for age Money Maker son with a lovely nature, softness and strong boned. An eye-catching sire with a beautiful rein of neck and well laid in shoulder. Dam is from the Unique 8R family that has contributed so much for the breed.



LOT 30 MINNAMURRA SERGEANT S22 (AI)

RIVER HILL TOUCHDOWN 50T	BORN:	28/3/2021
SIRE: RIVER HILL CRUSADER 025C	COLOUR:	Speckled
RIVER HILL ALYNDA 025A	IDENTIFIER:	MPC S22
	DNA TESTS:	P:F R:F M:F L:C/C
CODIAK SO LONG GEORGE 6Z		
DAM: MINNAMURRA 6Z UNIQUE L139		
MINNAMURRA 300X UNIQUE J127		

July 2022 Speckle Park Group Breedplan

Calving Ease		Growth & Maternal						Fertility		Carcase				
	GL	BW	200	400	600	MCW	Milk	SS	CWT	EMA	RIB	RUMP	RBY	IMF
EBV	+0.3	+0.5	+12	+17	+22	+20	+4	+0.4	+14	+0.8	+1.3	+1.8	-1.0	+0.5
ACC	64%	75%	73%	70%	67%	53%	37%	73%	59%	49%	58%	58%	55%	48%
B.Av	+0.1	+1.7	+15	+23	+32	+33	+4	+0.4	+19	+0.7	+0.1	+0.0	+0.1	+0.1

An eye appealing young sire who stands out with his balance correctness and ability to stand square every time. Lot 30 scanned highly for IMF and fats within the contemporary group. A low birthweight, high rib and rump fat bull with a lot of testicular development. Suitable for heifers.

LOT 31 MINNAMURRA SIGMUND S38 (AI)

SIRE: JOHNER STOCK FARM UNMARKED 2D

JENCREST YAVONNA 6Y

SIX STAR ANCHOR E229

DAM: MINNAMURRA E229 JANETTE L92

SIX STAR 82U JANETTE F1

BORN: 24/3/2021

COLOUR: Speckled

IDENTIFIER: MPC S38

DNA TESTS: P:F R:F M:F
L:C/C

\$ _____

July 2022 Speckle Park Group Breedplan

Calving Ease			Growth & Maternal					Fertility		Carcase				
	GL	BW	200	400	600	MCW	Milk	SS	CWT	EMA	RIB	RUMP	RBY	IMF
EBV	+0.7	+0.9	+11	+18	+26	+28	+0	+0.7	+17	+1.0	+0.8	+1.0	-0.3	+0.3
ACC	62%	76%	73%	71%	68%	54%	36%	73%	59%	49%	58%	58%	56%	49%
B.Av	+0.1	+1.7	+15	+23	+32	+33	+4	+0.4	+19	+0.7	+0.1	+0.0	+0.1	+0.1

A smooth muscled, stylish fronted bull, well suited to both export and domestic markets. Lot 31 gives you a lot of diversity in your program. A low birthweight, high coverage sire, well suited to heifers. (Video available online).





LOT 32 MINNAMURRA SCOOTER S14 (AI)

HS UNTAPPED 3A	BORN:	31/3/2021
SIRE: JOHNER STOCK FARM UNMARKED 2D	COLOUR:	Speckled
JENCREST YAVONNA 6Y	IDENTIFIER:	MPC S14
MINNAMURRA JOE J141	DNA TESTS:	P:F R:F M:F L:C/C
DAM: MINNAMURRA J141 JENNY M23		
MINNAMURRA 101Y JENNY K39	\$	_____

July 2022 Speckle Park Group Breedplan

	Calving Ease		Growth & Maternal					Fertility		Carcase				
	GL	BW	200	400	600	MCW	Milk	SS	CWT	EMA	RIB	RUMP	RBY	IMF
EBV	+2.4	+3.0	+18	+28	+35	+38	+1	+0.0	+20	+0.9	+1.6	+2.1	-1.0	+0.4
ACC	62%	75%	73%	70%	68%	53%	37%	72%	58%	48%	58%	57%	55%	48%
B.Av	+0.1	+1.7	+15	+23	+32	+33	+4	+0.4	+19	+0.7	+0.1	+0.0	+0.1	+0.1

A standout bull in this pen for his extra weight for age, depth through the lower leg, twist and extra width of thurlle. A soft, easy doing bull with the ability to lay down fat and breed early saleable progeny.

LOT 33 MINNAMURRA SIMON S41 (AI)

RIVER HILL TOUCHDOWN 50T

SIRE: RIVER HILL CRUSADER 025C

RIVER HILL ALYNDA 025A

ASPEN ACRES TNT 4Y

DAM: MINNAMURRA 4Y JANETTE K23

NOTTA 50S JANETTE 5W

BORN: 3/4/2021

COLOUR: White

IDENTIFIER: MPC S41

DNA TESTS: P:F R:F M:C
L:C/C

\$ _____

July 2022 Speckle Park Group Breedplan

Calving Ease			Growth & Maternal					Fertility			Carcase				
	GL	BW	200	400	600	MCW	Milk	SS	CWT	EMA	RIB	RUMP	RBY	IMF	
EBV	+1.5	+1.0	+12	+19	+26	+19	+3	+0.0	+17	+0.8	+0.0	+0.0	-0.1	+0.1	
ACC	60%	75%	65%	60%	60%	48%	31%	51%	46%	36%	44%	44%	42%	38%	
B.Av	+0.1	+1.7	+15	+23	+32	+33	+4	+0.4	+19	+0.7	+0.1	+0.0	+0.1	+0.1	

A bigger framed, mid maturity bull with good rein of neck, length and slope from hip to pin. Lot 33 will breed beautiful, replacement females. (Video available online).

LOT 34 MINNAMURRA SANTANA S6 (AI)

RIVER HILL TOUCHDOWN 50T

SIRE: RIVER HILL CRUSADER 025C

RIVER HILL ALYNDA 025A

CODIAK SO LONG GEORGE 6Z

DAM: MINNAMURRA 6Z NICE LADY N79

MINNAMURRA 101Y NICE LADY L54

BORN: 6/4/2021

COLOUR: Speckled

IDENTIFIER: MPC S6

DNA TESTS: P:F R:F M:F
L:C/C

\$ _____

July 2022 Speckle Park Group Breedplan

Calving Ease			Growth & Maternal					Fertility			Carcase				
	GL	BW	200	400	600	MCW	Milk	SS	CWT	EMA	RIB	RUMP	RBY	IMF	
EBV	-1.2	+1.7	+18	+31	+39	+42	+2	+1.7	+21	+0.9	+0.8	+1.0	-0.6	+0.5	
ACC	63%	75%	73%	70%	67%	53%	35%	73%	58%	49%	58%	58%	55%	48%	
B.Av	+0.1	+1.7	+15	+23	+32	+33	+4	+0.4	+19	+0.7	+0.1	+0.0	+0.1	+0.1	

A good weight for age Crusader son, very similar to Lot 34. If you are looking to increase sexual maturity and meat quality in your herd then Santana will make your program sing. (Video available online).



LOT 35 MINNAMURRA SERPENTINE S24 (ET)

RIVER HILL TOUCHDOWN 50T	BORN:	29/3/2021
SIRE: RIVER HILL CRUSADER 025C	COLOUR:	Leopard
RIVER HILL ALYNDA 025A	IDENTIFIER:	MPC S24
RIVER HILL STRIKER 50U	DNA TESTS:	P:C R:F M:F L:C/T
DAM: MINNAMURRA 50U UNIQUE J129		
CODIAK UNIQUE 8R	\$	_____

July 2022 Speckle Park Group Breedplan

Calving Ease		Growth & Maternal						Fertility		Carcase				
	GL	BW	200	400	600	MCW	Milk	SS	CWT	EMA	RIB	RUMP	RBY	IMF
EBV	+0.3	+0.2	+13	+18	+24	+20	+4	-0.8	+18	+0.3	+0.0	+0.0	-0.3	+0.3
ACC	64%	76%	74%	72%	68%	54%	38%	75%	60%	51%	59%	59%	56%	49%
B.Av	+0.1	+1.7	+15	+23	+32	+33	+4	+0.4	+19	+0.7	+0.1	+0.0	+0.1	+0.1

The dam of Lot 35 is in our donor program with 17 registered calves to date and 3 sons in this catalogue. A big volume, high-capacity female with an excellent bag of milk. Lot 35 displays good weight for age with a lighter birthweight and a shoulder placement well suited to heifers. Lot 35 has scurs.



LOT 36 MINNAMURRA SENATOR S21 (AI)

HS UNTAPPED 3A	BORN:	29/3/2021
SIRE: JOHNER STOCK FARM UNMARKED 2D	COLOUR:	Speckled
JENCREST YAVONNA 6Y	IDENTIFIER:	MPC S21
REDNECK JSF WHISKEY 4B	DNA TESTS:	P:F R:F M:C L:C/C
DAM: MINNAMURRA 4B PASSION STAR N41		
MINNAMURRA 60W PASSION STAR J9	\$	_____

July 2022 Speckle Park Group Breedplan

	Calving Ease		Growth & Maternal					Fertility		Carcase				
	GL	BW	200	400	600	MCW	Milk	SS	CWT	EMA	RIB	RUMP	RBY	IMF
EBV	+1.0	+2.0	+16	+32	+36	+32	+2	+0.9	+20	+1.1	+1.3	+1.8	-1.2	+0.3
ACC	63%	76%	73%	71%	68%	54%	37%	73%	59%	49%	58%	58%	56%	49%
B.Av	+0.1	+1.7	+15	+23	+32	+33	+4	+0.4	+19	+0.7	+0.1	+0.0	+0.1	+0.1

One of the deepest bodied, widest barrelled bulls to be catalogued. So much heart room and capacity to Lot 36. A high meat quality, easy doing bull combining growth, fertility, and constitution very well.



LOT 37 MINNAMURRA STELLAR S67 (ET)

HS UNTAPPED 3A	BORN:	22/4/2021
SIRE: JOHNER STOCK FARM UNMARKED 2D	COLOUR:	Speckled
JENCREST YAVONNA 6Y	IDENTIFIER:	MPC S67
REDNECK JSF WHISKEY 4B	DNA TESTS:	P:C R:F M:C L:C/C
DAM: MINNAMURRA 4B MARIE N40		
MINNAMURRA 50U MARIE J121	\$	_____

July 2022 Speckle Park Group Breedplan

Calving Ease		Growth & Maternal						Fertility		Carcase				
	GL	BW	200	400	600	MCW	Milk	SS	CWT	EMA	RIB	RUMP	RBY	IMF
EBV	+0.7	+0.9	+10	+24	+23	+21	+1	+1.1	+16	+1.4	+2.2	+3.1	-1.4	+0.4
ACC	55%	75%	71%	70%	67%	53%	32%	73%	59%	50%	58%	58%	56%	49%
B.Av	+0.1	+1.7	+15	+23	+32	+33	+4	+0.4	+19	+0.7	+0.1	+0.0	+0.1	+0.1

Stellar has caught the eye of a lot of good judges and is one of the stand-out lots catalogued this year. A young sire with traits stacked for profitability. It's rare to combine meat quality, EMA, fats, high sexual maturity, and birthweight all in the one package. Lot 37 will have a stellar impact on the breed. MPC retains the right to collect 200 straws of semen at a future date.



LOT 38 MINNAMURRA SANDFORD S5 (AI)

P.A.R. ASCAPE 89A	BORN:	1/4/2021
SIRE: DOUBLE S JSF RAWHIDE 260D	COLOUR:	Speckled
UNEEDA YASEMIN 260Y	IDENTIFIER:	MPC S5
CODIAK SO LONG GEORGE 6Z	DNA TESTS:	P:F R:F M:C L:C/C
DAM: MINNAMURRA 6Z SPANISH ANGEL P154		
MINNAMURRA E229 SPANISH ANGEL L95	\$	_____

July 2022 Speckle Park Group Breedplan

	Calving Ease		Growth & Maternal					Fertility		Carcase				
	GL	BW	200	400	600	MCW	Milk	SS	CWT	EMA	RIB	RUMP	RBY	IMF
EBV	+2.0	+2.6	+9	+14	+10	+4	+2	+0.6	+5	+0.1	-0.1	-0.3	+0.2	-0.2
ACC	63%	74%	73%	71%	68%	53%	30%	73%	59%	49%	59%	58%	56%	49%
B.Av	+0.1	+1.7	+15	+23	+32	+33	+4	+0.4	+19	+0.7	+0.1	+0.0	+0.1	+0.1

A long bodied, later maturing bull who will add growth and frame to your cow herd. A very quiet natured bull with a neat sheath and good slope from hip to pin to add calving ease.



LOT 39 MINNAMURRA SAINTLY S1 (AI)

HS UNTAPPED 3A	BORN:	23/3/2021
SIRE: JOHNER STOCK FARM UNMARKED 2D	COLOUR:	Speckled
JENCREST YAVONNA 6Y	IDENTIFIER:	MPC S1
CODIAK SO LONG GEORGE 6Z	DNA TESTS:	P:F R:C M:F L:C/T
DAM: MINNAMURRA 6Z TORI L120		
MINNAMURRA 300X TORI J66	\$	_____

July 2022 Speckle Park Group Breedplan

	Calving Ease		Growth & Maternal					Fertility		Carcase				
	GL	BW	200	400	600	MCW	Milk	SS	CWT	EMA	RIB	RUMP	RBY	IMF
EBV	+1.2	+1.9	+11	+14	+17	+17	+0	+1.0	+8	+0.3	+0.7	+0.9	-0.4	+0.0
ACC	64%	76%	74%	71%	69%	55%	39%	74%	60%	50%	59%	58%	56%	50%
B.Av	+0.1	+1.7	+15	+23	+32	+33	+4	+0.4	+19	+0.7	+0.1	+0.0	+0.1	+0.1

A soft, easy doing, long bodied bull with a good nature and a maturity pattern to suit various markets.



LOT 40 MINNAMURRA SHERWOOD S34 (AI)

SIRE: RIVER HILL CRUSADER 025C	RIVER HILL TOUCHDOWN 50T	BORN:	29/3/2021
	RIVER HILL ALYNDA 025A	COLOUR:	Speckled
	CODIAK SO LONG GEORGE 6Z	IDENTIFIER:	MPC S34
DAM: MINNAMURRA 6Z U-PICK N24	MINNAMURRA 101Y U-PICK L31	DNA TESTS:	P:F R:F M:F L:C/T
		\$	_____

July 2022 Speckle Park Group Breedplan

	Calving Ease		Growth & Maternal					Fertility		Carcase				
	GL	BW	200	400	600	MCW	Milk	SS	CWT	EMA	RIB	RUMP	RBY	IMF
EBV	+1.2	+1.8	+14	+26	+31	+25	+5	+1.3	+18	+1.0	-0.1	-0.2	-0.1	+0.2
ACC	63%	75%	73%	70%	67%	52%	35%	72%	58%	47%	56%	56%	54%	46%
B.Av	+0.1	+1.7	+15	+23	+32	+33	+4	+0.4	+19	+0.7	+0.1	+0.0	+0.1	+0.1

A stylish, eye-catching young sire with a lot of growth and width of thurle. Lot 40 will not only add yield to your program but also meat quality and sexual maturity. These are high profit driving genetics.



LOT 41 MINNAMURRA STRATFORD S72 (ET)

P.A.R. ASCAPE 89A	BORN:	26/4/2021
SIRE: DOUBLE S JSF RAWHIDE 260D	COLOUR:	White
UNEEEDA YASEMIN 260Y	IDENTIFIER:	MPC S72
SPOTS 'N SPROUTS STANDS ALONE 300X	DNA TESTS:	P:F R:F M:C L:C/C
DAM: MINNAMURRA 300X TORI J66		
UPTO SPECS TORI 10T	\$	_____

July 2022 Speckle Park Group Breedplan

Calving Ease		Growth & Maternal						Fertility		Carcase					
	GL	BW	200	400	600	MCW	Milk	SS	CWT	EMA	RIB	RUMP	RBY	IMF	
EBV	+0.2	+0.8	+13	+20	+20	+19	+3	-1.1	+19	+1.3	+0.8	+1.1	+0.1	+0.0	
ACC	56%	75%	72%	70%	68%	55%	37%	74%	60%	51%	59%	59%	57%	51%	
B.Av	+0.1	+1.7	+15	+23	+32	+33	+4	+0.4	+19	+0.7	+0.1	+0.0	+0.1	+0.1	

A deep hindquarterd, wide topped bull with a lot of muscle expression. An earlier maturing bull who will add a lot of carcase and softness to your program.



LOT 42 MINNAMURRA STRIKER S73 (ET)

RIVER HILL TOUCHDOWN 50T
SIRE: RIVER HILL CRUSADER 025C
 RIVER HILL ALYNDA 025A
 CODIAK CRIKEY GNK 13U
DAM: SIX STAR 13U PENELOPE G29
 LAKEVIEW PENELOPE 5P

BORN: 17/4/2021
 COLOUR: White
 IDENTIFIER: MPC S73
 DNA TESTS: P:F R:F M:C
 L:C/T

\$ _____

July 2022 Speckle Park Group Breedplan

	Calving Ease		Growth & Maternal					Fertility		Carcase				
	GL	BW	200	400	600	MCW	Milk	SS	CWT	EMA	RIB	RUMP	RBY	IMF
EBV	-0.9	-1.6	+7	+21	+23	+21	+1	+0.8	+23	+1.9	+0.5	+0.6	+0.1	+0.1
ACC	55%	76%	72%	69%	66%	51%	34%	74%	58%	48%	55%	55%	53%	45%
B.Av	+0.1	+1.7	+15	+23	+32	+33	+4	+0.4	+19	+0.7	+0.1	+0.0	+0.1	+0.1

A very low birthweight Crusader son with an excellent pedigree. His dam has 15 registered calves and is part of our donor program. I really admire Lot 42 for his expressive muscle pattern and softness, a hard combination to put together. A very sirey, strong headed young bull who ticks a lot of boxes. Well worth an inspection.



LOT 43 MINNAMURRA SEDGEWICK S20 (AI)

RIVER HILL TOUCHDOWN 50T	BORN:	15/3/2021
SIRE: RIVER HILL CRUSADER 025C	COLOUR:	Speckled
RIVER HILL ALYNDA 025A	IDENTIFIER:	MPC S20
REDNECK JSF WHISKEY 4B	DNA TESTS:	P:F R:F M:C L:C/C
DAM: MINNAMURRA 4B TEEKA N5		
MINNAMURRA 82U TEEKA J44	\$	_____

July 2022 Speckle Park Group Breedplan

Calving Ease		Growth & Maternal						Fertility		Carcase				
	GL	BW	200	400	600	MCW	Milk	SS	CWT	EMA	RIB	RUMP	RBY	IMF
EBV	-1.9	+0.4	+15	+23	+29	+26	+3	+0.5	+15	+0.9	+1.4	+1.9	-1.0	+0.3
ACC	61%	74%	65%	62%	62%	50%	33%	52%	49%	40%	49%	49%	47%	43%
B.Av	+0.1	+1.7	+15	+23	+32	+33	+4	+0.4	+19	+0.7	+0.1	+0.0	+0.1	+0.1

Another young sire that will have a lot of boxes ticked in your catalogue. The Crusader X Whiskey genetics have blended well. Lot 43 shows good weight and length of body and will give you several options of markets with his progeny. A clean fronted, stylish sire who strides out, stands square with his head above his spine. Suitable for heifers.



LOT 44 MINNAMURRA SIDEKICK S36 (AI)

HS UNTAPPED 3A
SIRE: JOHNER STOCK FARM UNMARKED 2D
 JENCREST YAVONNA 6Y
 STAR BANK KING GEORGE 82U
DAM: MINNAMURRA 82U MISS CARLA L40
 CODIAK MISS KARLA 21M

BORN: 27/3/2021
 COLOUR: Speckled
 IDENTIFIER: MPC S36
 DNA TESTS: P:F R:F M:F
 L:C/T

\$ _____

July 2022 Speckle Park Group Breedplan

Calving Ease		Growth & Maternal						Fertility		Carcase				
	GL	BW	200	400	600	MCW	Milk	SS	CWT	EMA	RIB	RUMP	RBY	IMF
EBV	+1.4	+1.6	+13	+22	+31	+34	+1	+1.1	+20	+1.1	+0.7	+0.9	-0.1	+0.0
ACC	63%	76%	73%	71%	68%	54%	39%	73%	59%	48%	56%	56%	53%	47%
B.Av	+0.1	+1.7	+15	+23	+32	+33	+4	+0.4	+19	+0.7	+0.1	+0.0	+0.1	+0.1

A quick growing, domestic type of bull whose progeny will turn off quickly. A powerful young sire with a lot of punch and natural muscle expression. You have to admire the depth of hindquarter this bull will add to your program.



LOT 45 MINNAMURRA SANTOS S8 (AI)

RIVER HILL TOUCHDOWN 50T	BORN:	27/3/2021
SIRE: RIVER HILL CRUSADER 025C	COLOUR:	White
RIVER HILL ALYNDA 025A	IDENTIFIER:	MPC S8
CODIAK SO LONG GEORGE 6Z	DNA TESTS:	P:C R:C M:F L:C/T
DAM: MINNAMURRA 6Z TORI N122		
MINNAMURRA 300X TORI J113	\$	_____

July 2022 Speckle Park Group Breedplan

Calving Ease		Growth & Maternal						Fertility		Carcase				
	GL	BW	200	400	600	MCW	Milk	SS	CWT	EMA	RIB	RUMP	RBY	IMF
EBV	+0.7	+0.4	+7	+9	+16	+7	+0	-0.2	+7	+0.2	-0.7	-1.0	+0.0	+0.0
ACC	62%	75%	73%	70%	67%	53%	36%	73%	59%	49%	58%	58%	55%	48%
B.Av	+0.1	+1.7	+15	+23	+32	+33	+4	+0.4	+19	+0.7	+0.1	+0.0	+0.1	+0.1

A long bodied, smooth shouldered bull with a lot of length of cannon bone, indicating he will grow on. A low birthweight sire, well suited to heifers.

LOT 46 MINNAMURRA SALVADOR S2 (AI)

RIVER HILL TOUCHDOWN 50T

SIRE: RIVER HILL CRUSADER 025C

RIVER HILL ALYNDA 025A

CODIAK SO LONG GEORGE 6Z

DAM: MINNAMURRA 6Z PRAIRIE FIRE L118

SIX STAR PRAIRIE FIRE E201

BORN: 28/3/2021

COLOUR: Leopard

IDENTIFIER: MPC S2

DNA TESTS: P:F R:F M:C
L:C/T

\$ _____

July 2022 Speckle Park Group Breedplan

Calving Ease			Growth & Maternal					Fertility		Carcase					
	GL	BW	200	400	600	MCW	Milk	SS	CWT	EMA	RIB	RUMP	RBY	IMF	
EBV	+0.9	+0.7	+7	+11	+15	+16	-1	+0.2	+9	+0.5	+1.0	+1.3	-0.7	+0.6	
ACC	62%	75%	73%	70%	67%	52%	37%	73%	58%	48%	57%	57%	54%	46%	
B.Av	+0.1	+1.7	+15	+23	+32	+33	+4	+0.4	+19	+0.7	+0.1	+0.0	+0.1	+0.1	

A deep ribbed, deep bodied bull with a lot of heart room and width of girth. A strong hocked, easy moving bull with high fats and a low birthweight. Well suited to Northern Australia. (Video available online).





LOT 47 MINNAMURRA SHADOWLAND S25 (AI)

P.A.R. ASCAPE 89A	BORN:	3/4/2021
SIRE: DOUBLE S JSF RAWHIDE 260D	COLOUR:	White
UNEEEDA YASEMIN 260Y	IDENTIFIER:	MPC S25
REDNECK JSF WHISKEY 4B	DNA TESTS:	P:F R:F M:F L:C/T
DAM: MINNAMURRA 4B JANETTE P259		
MINNAMURRA 300X JANETTE J22	\$	_____

July 2022 Speckle Park Group Breedplan

	Calving Ease		Growth & Maternal					Fertility		Carcase				
	GL	BW	200	400	600	MCW	Milk	SS	CWT	EMA	RIB	RUMP	RBY	IMF
EBV	+1.3	+0.1	+4	+12	+8	+9	+4	+0.0	+6	+0.1	+2.7	+3.6	-2.2	+0.7
ACC	62%	74%	73%	71%	68%	54%	30%	74%	60%	50%	58%	58%	56%	50%
B.Av	+0.1	+1.7	+15	+23	+32	+33	+4	+0.4	+19	+0.7	+0.1	+0.0	+0.1	+0.1

A slick coated, mid maturity bull with a very low birthweight and neat sheath, well suited to Bos Indicus females.



LOT 48 MINNAMURRA SLATER S45 (AI)

P.A.R. ASCAPE 89A
SIRE: DOUBLE S JSF RAWHIDE 260D
 UNEEDA YASEMIN 260Y

BORN: 24/3/2021
 COLOUR: White
 IDENTIFIER: MPC S45
 DNA TESTS: P:F R:F M:F
 L:C/C

DAM: ?

UNREGISTERED

\$ _____

July 2022 Speckle Park Group Breedplan

Calving Ease		Growth & Maternal						Fertility		Carcase				
	GL	BW	200	400	600	MCW	Milk	SS	CWT	EMA	RIB	RUMP	RBY	IMF
EBV														
ACC														
B.Av	+0.1	+1.7	+15	+23	+32	+33	+4	+0.4	+19	+0.7	+0.1	+0.0	+0.1	+0.1

A very similar type of bull to Lot 47 only carrying more carcase along the spine and behind the shoulder. A quiet-natured, low birthweight bull, also well suited to Bos Indicus cows and heifers. We were unable to get a DNA match for his dam, so S15 is sold unregistered as a commercial bull.



LOT 49 MINNAMURRA SHAMBALA S30 (AI)

P.A.R. ASCAPE 89A
SIRE: DOUBLE S JSF RAWHIDE 260D
 UNEEEDA YASEMIN 260Y

BORN: 6/4/2021
 COLOUR: White
 IDENTIFIER: MPC S30
 DNA TESTS: P:F R:F M:F
 L:C/T

CODIAK SO LONG GEORGE 6Z
DAM: MINNAMURRA 6Z TORI P181
 MINNAMURRA 300X TORI J88

\$ _____

July 2022 Speckle Park Group Breedplan

Calving Ease		Growth & Maternal						Fertility		Carcase				
	GL	BW	200	400	600	MCW	Milk	SS	CWT	EMA	RIB	RUMP	RBY	IMF
EBV	-0.3	+3.2	+18	+23	+25	+24	+2	+1.4	+11	+1.0	+1.4	+1.9	-0.5	+0.2
ACC	63%	74%	73%	71%	68%	53%	31%	73%	59%	49%	59%	58%	56%	50%
B.Av	+0.1	+1.7	+15	+23	+32	+33	+4	+0.4	+19	+0.7	+0.1	+0.0	+0.1	+0.1

A Rawhide son with a lot of testicular development, capacity and strength over the loin. A wide muzzled, soft, easy doing bull with an excellent nature.



LOT 50 MINNAMURRA SPARTACUS S54 (ET)

A & W 15R	BORN:	21/4/2021
SIRE: PARKVALE KIWI K1	COLOUR:	White
ROB 'N SON'S FARMS 6R	IDENTIFIER:	MPC S54
SPKNZ EXTREME E27	DNA TESTS:	P:F R:F M:F L:C/T
DAM: PARKVALE HARRIET		
SPKNZ E42		\$ _____

July 2022 Speckle Park Group Breedplan

Calving Ease		Growth & Maternal						Fertility		Carcase				
	GL	BW	200	400	600	MCW	Milk	SS	CWT	EMA	RIB	RUMP	RBY	IMF
EBV	+0.6	+1.0	+11	+16	+25	+23	+3	+0.5	+14	+0.2	+0.0	-0.1	-0.2	+0.4
ACC	43%	71%	58%	52%	54%	43%	37%	36%	40%	30%	36%	36%	34%	32%
B.Av	+0.1	+1.7	+15	+23	+32	+33	+4	+0.4	+19	+0.7	+0.1	+0.0	+0.1	+0.1

A long bodied, smooth fronted Parkvale Kiwi son offering outcross genetics. An efficient moving bull with a maturity pattern showing he will grow on. If you are looking to add meat quality to your herd, Lot 50 is the bull.

LOT 51 MINNAMURRA SPOTLIGHT S58 (ET)

RIVER HILL TOUCHDOWN 50T
SIRE: RIVER HILL CRUSADER 025C

RIVER HILL ALYNDA 025A

CODIAK CRIKEY GNK 13U

DAM: SIX STAR 13U PENELOPE G29

LAKEVIEW PENELOPE 5P

BORN: 28/4/2021

COLOUR: White

IDENTIFIER: MPC S58

DNA TESTS: P:F R:F M:F
L:C/C

\$ _____

July 2022 Speckle Park Group Breedplan

Calving Ease			Growth & Maternal					Fertility		Carcase					
	GL	BW	200	400	600	MCW	Milk	SS	CWT	EMA	RIB	RUMP	RBY	IMF	
EBV	-0.2	-0.4	+9	+23	+26	+26	+1	+0.6	+22	+1.5	+0.8	+1.0	-0.2	+0.2	
ACC	55%	76%	72%	69%	66%	51%	34%	74%	58%	48%	55%	55%	53%	45%	
B.Av	+0.1	+1.7	+15	+23	+32	+33	+4	+0.4	+19	+0.7	+0.1	+0.0	+0.1	+0.1	

A smooth bodied, efficient type of bull with a good mix of muscle to fat which is very hard to do. Combine this with a low birthweight, shorter gestation and good testicle size, Lot 51 ticks a lot of boxes. (Video available online).

LOT 52 MINNAMURRA STANTON S61 (ET)

RIVER HILL TOUCHDOWN 50T
SIRE: RIVER HILL CRUSADER 025C

RIVER HILL ALYNDA 025A

CODIAK CRIKEY GNK 13U

DAM: SIX STAR 13U PENELOPE G29

LAKEVIEW PENELOPE 5P

BORN: 24/4/2021

COLOUR: White

IDENTIFIER: MPC S61

DNA TESTS: P:F R:F M:C
L:C/C

\$ _____

July 2022 Speckle Park Group Breedplan

Calving Ease			Growth & Maternal					Fertility		Carcase					
	GL	BW	200	400	600	MCW	Milk	SS	CWT	EMA	RIB	RUMP	RBY	IMF	
EBV	-0.3	-0.3	+11	+24	+28	+29	+1	+1.3	+23	+1.5	+0.7	+1.0	-0.1	+0.2	
ACC	55%	76%	72%	69%	66%	51%	34%	74%	58%	48%	55%	55%	53%	45%	
B.Av	+0.1	+1.7	+15	+23	+32	+33	+4	+0.4	+19	+0.7	+0.1	+0.0	+0.1	+0.1	

A bull that really stands out in this part of the catalogue. A slick coated high-capacity sire with a wedge-shaped shoulder placement and angle. A very low birthweight bull, who combines a lot of solid profitable traits. Well worth an inspection. (Video available online).

LOT 53 MINNAMURRA STEPHEN S68 (ET)

REDNECK FERDINAND 14Y
SIRE: REDNECK JSF WHISKEY 4B
 REDNECK WHISKEY 7W
 STAR BANK KING GEORGE 82U
DAM: MINNAMURRA 82U ROBERTA J18
 ROB 'N SON'S FARMS 6R

BORN: 21/4/2021
 COLOUR: Speckled
 IDENTIFIER: MPC S68
 DNA TESTS: P:F R:C M:F
 L:C/T

\$ _____

July 2022 Speckle Park Group Breedplan

	Calving Ease		Growth & Maternal					Fertility		Carcase					
	GL	BW	200	400	600	MCW	Milk	SS	CWT	EMA	RIB	RUMP	RBY	IMF	
EBV	-0.6	+1.0	+12	+21	+27	+30	+3	+1.3	+13	+0.7	+2.0	+2.9	-1.5	+0.3	
ACC	57%	76%	73%	72%	70%	58%	49%	74%	62%	52%	59%	59%	57%	51%	
B.Av	+0.1	+1.7	+15	+23	+32	+33	+4	+0.4	+19	+0.7	+0.1	+0.0	+0.1	+0.1	

A bigger framed, stylish fronted son of the legendary Redneck Whiskey. Carries the beautiful front end that Whiskey produces. A high rib and rump fat sire that will breed beautiful heifers. (Video available online).





LOT 54 MINNAMURRA SCOUT S17 (AI)

HS UNTAPPED 3A	BORN:	31/3/2021
SIRE: JOHNER STOCK FARM UNMARKED 2D	COLOUR:	Speckled
JENCREST YAVONNA 6Y	IDENTIFIER:	MPC S17
CODIAK SO LONG GEORGE 6Z	DNA TESTS:	P:F R:F M:C L:C/C
DAM: MINNAMURRA 6Z ALTHEA N85		
MINNAMURRA 300X ALTHEA L43	\$ _____	

July 2022 Speckle Park Group Breedplan

	Calving Ease		Growth & Maternal					Fertility		Carcase					
	GL	BW	200	400	600	MCW	Milk	SS	CWT	EMA	RIB	RUMP	RBY	IMF	
EBV	+1.5	+0.2	+6	+19	+20	+21	+3	+0.4	+19	+1.5	+0.8	+1.1	+0.0	+0.1	
ACC	63%	75%	73%	71%	68%	54%	38%	73%	59%	49%	58%	58%	55%	48%	
B.Av	+0.1	+1.7	+15	+23	+32	+33	+4	+0.4	+19	+0.7	+0.1	+0.0	+0.1	+0.1	

A bull that will take your eye. An extremely thick, well-muscled bull who stands square and correctly every time. It's a hard genetic combination to have this much carcass with such efficiency of movement. This tells you Lot 54's shoulder placement and structure are near perfect. A low birthweight bull suitable for heifers.

LOT 55 MINNAMURRA SAMSON S3 (AI)

P.A.R. ASCAPE 89A BORN: 26/2/2021
SIRE: DOUBLE S JSF RAWHIDE 260D COLOUR: Speckled
 UNEEDA YASEMIN 260Y IDENTIFIER: MPC S3
 CODIAK SO LONG GEORGE 6Z DNA TESTS: P:F R:F M:C
 L:C/T
DAM: MINNAMURRA 6Z PHO-FINISH P172
 MINNAMURRA 101Y PHO-FINISH K33 \$ _____

July 2022 Speckle Park Group Breedplan

Calving Ease		Growth & Maternal						Fertility		Carcase					
	GL	BW	200	400	600	MCW	Milk	SS	CWT	EMA	RIB	RUMP	RBY	IMF	
EBV	-1.6	-2.8	-3	-6	-13	-19	+5	-0.5	+2	+0.4	+0.7	+0.9	-0.1	+0.1	
ACC	55%	74%	72%	70%	67%	53%	30%	73%	59%	49%	58%	58%	56%	49%	
B.Av	+0.1	+1.7	+15	+23	+32	+33	+4	+0.4	+19	+0.7	+0.1	+0.0	+0.1	+0.1	

A very low birthweight bull with good movement and sound structure. An early maturing, deep flanked and high constitution bull, well suited to heifers. (Video available online).

LOT 56 MINNAMURRA SHOOTER S35

JOHNER STOCK FARM TRADE SECRET 11A BORN: 1/4/2021
SIRE: JACKUNGAH NATE N08 COLOUR: White
 WATTLE GROVE SPARKLE E31 IDENTIFIER: MPC S35
 SIX STAR ANCHOR E229 DNA TESTS: P:F R:F M:F
 L:C/T
DAM: MINNAMURRA E229 SPANISH ANGEL L95
 SIX STAR 82U SPANISH ANGEL \$ _____

July 2022 Speckle Park Group Breedplan

Calving Ease		Growth & Maternal						Fertility		Carcase					
	GL	BW	200	400	600	MCW	Milk	SS	CWT	EMA	RIB	RUMP	RBY	IMF	
EBV	-1.0	+0.4	+6	+14	+18	+22	+1	+1.5	+8	-0.4	+0.2	+0.3	-0.4	-0.1	
ACC	49%	75%	71%	69%	67%	53%	36%	73%	59%	49%	58%	58%	55%	48%	
B.Av	+0.1	+1.7	+15	+23	+32	+33	+4	+0.4	+19	+0.7	+0.1	+0.0	+0.1	+0.1	

Take aim at this young Nate son if you are looking to increase fertility in your replacement females. One of the highest scrotal bulls catalogued. A quiet-natured, low birthweight bull who stands square with his head above his spine. (Video available online).

LOT 57 MINNAMURRA SOLDIER S49 (ET)

REDNECK FERDINAND 14Y
SIRE: REDNECK JSF WHISKEY 4B
 REDNECK WHISKEY 7W
 RIVER HILL STRIKER 50U
DAM: MINNAMURRA 50U TEEKA J110
 UPTO SPECS TEEKA 8T

BORN: 22/4/2021
 COLOUR: Speckled
 IDENTIFIER: MPC S49
 DNA TESTS: P:F R:C M:C
 L:C/C

\$ _____

July 2022 Speckle Park Group Breedplan

Calving Ease		Growth & Maternal					Fertility		Carcase					
	GL	BW	200	400	600	MCW	Milk	SS	CWT	EMA	RIB	RUMP	RBY	IMF
EBV	+0.6	+3.7	+17	+26	+31	+30	+1	+1.8	+10	+0.9	+1.4	+2.0	-0.9	+0.1
ACC	57%	76%	73%	72%	70%	58%	50%	75%	63%	54%	62%	62%	60%	54%
B.Av	+0.1	+1.7	+15	+23	+32	+33	+4	+0.4	+19	+0.7	+0.1	+0.0	+0.1	+0.1

A sirey headed Whiskey type of bull with an enormous barrel and spring of rib to him. Again, a high fertility, big scrotal measuring young sire, right at the top of his contemporary group. (Video available online).





LOT 58 MINNAMURRA STARLIGHT S63 (ET)

P.A.R. ASCAPE 89A
SIRE: DOUBLE S JSF RAWHIDE 260D
 UNEEDA YASEMIN 260Y

BORN: 1/4/2021
 COLOUR: Black
 IDENTIFIER: MPC S63
 DNA TESTS: P:C R:F M:C
 L:C/T

RIVER HILL STRIKER 50U
DAM: MINNAMURRA 50U UNIQUE J129
 CODIAK UNIQUE 8R

\$ _____

July 2022 Speckle Park Group Breedplan

Calving Ease		Growth & Maternal						Fertility		Carcase				
	GL	BW	200	400	600	MCW	Milk	SS	CWT	EMA	RIB	RUMP	RBY	IMF
EBV	+0.2	+0.9	+11	+8	+10	+4	+4	-0.7	+9	+0.6	+0.3	+0.3	+0.1	+0.1
ACC	56%	76%	73%	71%	68%	55%	35%	75%	61%	51%	60%	59%	57%	51%
B.Av	+0.1	+1.7	+15	+23	+32	+33	+4	+0.4	+19	+0.7	+0.1	+0.0	+0.1	+0.1

A half ET brother to Lot 35. A neatly made, smooth coated, low birthweight bull with a lot of carcase shape and width of thurle is an early maturing package.



LOT 59 MINNAMURRA STATUTE S64 (ET)

STAR BANK KING GEORGE 82U	BORN:	23/4/2021
SIRE: SIX STAR ROYAL FLESH 101Y	COLOUR:	Speckled
STAR BANK 53R	IDENTIFIER:	MPC S64
SPOTS 'N SPROUTS STANDS ALONE 300X	DNA TESTS:	P:F R:F M:F L:C/C
DAM: MINNAMURRA 300X JANETTE J22		
P.A.R. JANETTE 44H	\$	_____

July 2022 Speckle Park Group Breedplan

Calving Ease		Growth & Maternal						Fertility		Carcase				
	GL	BW	200	400	600	MCW	Milk	SS	CWT	EMA	RIB	RUMP	RBY	IMF
EBV	+0.6	+2.2	+15	+24	+34	+45	+5	+1.8	+17	-0.3	+0.5	+0.6	-0.7	+0.5
ACC	57%	76%	74%	72%	70%	59%	55%	75%	63%	54%	61%	61%	59%	54%
B.Av	+0.1	+1.7	+15	+23	+32	+33	+4	+0.4	+19	+0.7	+0.1	+0.0	+0.1	+0.1

This Royal Flesh son will add some thump and fertility to your program, producing quick to turn off progeny. Statute has an interesting genetic combination, with moderate birth and growth with high scrotal, fats and meat quality.

LOT 60 MINNAMURRA STETSON S70 (ET)

RIVER HILL TOUCHDOWN 50T BORN: 28/4/2021
SIRE: RIVER HILL CRUSADER 025C COLOUR: Leopard
 RIVER HILL ALYNDA 025A IDENTIFIER: MPC S70
 RIVER HILL STRIKER 50U DNA TESTS: P:C R:F M:F
 L:C/C
DAM: MINNAMURRA 50U UNIQUE J129
 CODIAK UNIQUE 8R \$ _____

July 2022 Speckle Park Group Breedplan

Calving Ease		Growth & Maternal						Fertility		Carcase					
	GL	BW	200	400	600	MCW	Milk	SS	CWT	EMA	RIB	RUMP	RBY	IMF	
EBV	+0.6	+1.3	+14	+19	+28	+28	+4	+0.4	+16	+0.6	+0.8	+1.0	-0.6	+0.5	
ACC	55%	75%	72%	70%	67%	54%	38%	74%	60%	51%	58%	58%	56%	49%	
B.Av	+0.1	+1.7	+15	+23	+32	+33	+4	+0.4	+19	+0.7	+0.1	+0.0	+0.1	+0.1	

A full brother to Lot 35. A deep ribbed, quiet natured bull with a lot of girth and heart room. A very easy doing sire with tremendous constitution and doing ability. Well suited to bigger later maturing heifers. (Video available online).

LOT 61 MINNAMURRA SHAUN S18 (AI)

P.A.R. ASCAPE 89A BORN: 31/3/2021
SIRE: DOUBLE S JSF RAWHIDE 260D COLOUR: Black
 UNEEDA YASEMIN 260Y IDENTIFIER: MPC S18
 REDNECK JSF WHISKEY 4B DNA TESTS: P:F R:F M:F
 L:C/C
DAM: MINNAMURRA 4B SPANISH ANGEL P141
 MINNAMURRA 300X SPANISH ANGEL L23 \$ _____

July 2022 Speckle Park Group Breedplan

Calving Ease		Growth & Maternal						Fertility		Carcase					
	GL	BW	200	400	600	MCW	Milk	SS	CWT	EMA	RIB	RUMP	RBY	IMF	
EBV	+0.2	-0.4	+8	+21	+18	+14	+5	+0.5	+16	+0.8	+1.2	+1.6	-0.8	+0.2	
ACC	55%	72%	70%	68%	66%	52%	29%	71%	58%	48%	57%	57%	55%	49%	
B.Av	+0.1	+1.7	+15	+23	+32	+33	+4	+0.4	+19	+0.7	+0.1	+0.0	+0.1	+0.1	

A longer bodied, not as expressively muscled bull as some of the lots above him. Lot 61 walks with his head up with a nicely laid in shoulder, well suited to heifers. (Video available online).

LOT 63 MINNAMURRA STORMER S71 (ET)

STAR BANK KING GEORGE 82U BORN: 26/4/2021
SIRE: SIX STAR ROYAL FLESH 101Y COLOUR: Speckled
 STAR BANK 53R IDENTIFIER: MPC S71
 SPOTS 'N SPROUTS STANDS ALONE 300X DNA TESTS: P:F R:F M:F
 L:C/T
DAM: MINNAMURRA 300X JANETTE J22
 P.A.R. JANETTE 44H \$ _____

July 2022 Speckle Park Group Breedplan

Calving Ease		Growth & Maternal						Fertility		Carcase					
	GL	BW	200	400	600	MCW	Milk	SS	CWT	EMA	RIB	RUMP	RBY	IMF	
EBV	+1.0	+3.1	+18	+28	+41	+48	+5	+1.4	+20	+0.3	-0.1	-0.2	-0.1	+0.3	
ACC	55%	76%	68%	65%	66%	57%	55%	60%	57%	48%	55%	55%	53%	50%	
B.Av	+0.1	+1.7	+15	+23	+32	+33	+4	+0.4	+19	+0.7	+0.1	+0.0	+0.1	+0.1	

A fine haired, slick coated bull with impressive growth and fertility figures. Lot 63 is very well suited to a more tropical environment. (Video available online).

LOT 64 MINNAMURRA SPENCER S56 (ET)

P.A.R. ASCAPE 89A BORN: 5/5/2021
SIRE: DOUBLE S JSF RAWHIDE 260D COLOUR: Speckled
 UNEEDA YASEMIN 260Y IDENTIFIER: MPC S56
 SPOTS 'N SPROUTS STANDS ALONE 300X DNA TESTS: P:F R:C M:F
 L:C/T
DAM: MINNAMURRA 300X TORI J66
 UPTO SPECS TORI 10T \$ _____

July 2022 Speckle Park Group Breedplan

Calving Ease		Growth & Maternal						Fertility		Carcase					
	GL	BW	200	400	600	MCW	Milk	SS	CWT	EMA	RIB	RUMP	RBY	IMF	
EBV	+1.2	+2.8	+18	+18	+21	+20	+3	-1.0	+13	+0.5	+0.7	+0.9	-0.2	+0.0	
ACC	56%	75%	72%	70%	68%	55%	37%	74%	60%	51%	59%	59%	57%	51%	
B.Av	+0.1	+1.7	+15	+23	+32	+33	+4	+0.4	+19	+0.7	+0.1	+0.0	+0.1	+0.1	

A sirey headed, neatly shaped Royal Flesh bull with good expression through the hindquarter and a quiet nature. (Video available online).



LOT 65 MINNAMURRA SILVER S40 (AI)

HS UNTAPPED 3A	BORN:	25/3/2021
SIRE: JOHNER STOCK FARM UNMARKED 2D	COLOUR:	Speckled
JENCREST YAVONNA 6Y	IDENTIFIER:	MPC S40
CODIAK SO LONG GEORGE 6Z	DNA TESTS:	P:F R:F M:C L:C/T
DAM: MINNAMURRA 6Z JANETTE N45		
MINNAMURRA 101Y JANETTE L76	\$	_____

July 2022 Speckle Park Group Breedplan

Calving Ease		Growth & Maternal						Fertility		Carcase					
	GL	BW	200	400	600	MCW	Milk	SS	CWT	EMA	RIB	RUMP	RBY	IMF	
EBV	+0.8	-0.3	+2	+6	+7	+7	+1	+0.7	+7	+0.6	+0.7	+0.9	-0.4	+0.2	
ACC	63%	75%	73%	71%	68%	54%	38%	73%	59%	49%	58%	58%	56%	49%	
B.Av	+0.1	+1.7	+15	+23	+32	+33	+4	+0.4	+19	+0.7	+0.1	+0.0	+0.1	+0.1	

One of the lightest actual birthweight bulls to be catalogued this year. A smaller framed, lighter growth sire, perfect for heifers.

LOT 66 MINNAMURRA SERGIO S23 (AI)

HS UNTAPPED 3A
SIRE: JOHNER STOCK FARM UNMARKED 2D

JENCREST YAVONNA 6Y

SIX STAR ROYAL FLESH 101Y

DAM: MINNAMURRA 101Y JANETTE L76

SIX STAR 13U JANETTE G37

BORN: 25/3/2021
 COLOUR: Speckled
 IDENTIFIER: MPC S23
 DNA TESTS: P:F R:F M:F
 L:C/T

\$ _____

July 2022 Speckle Park Group Breedplan

Calving Ease		Growth & Maternal						Fertility		Carcase					
	GL	BW	200	400	600	MCW	Milk	SS	CWT	EMA	RIB	RUMP	RBY	IMF	
EBV	+1.7	+1.7	+10	+12	+19	+17	+0	+0.3	+11	+0.6	+0.3	+0.4	-0.1	+0.1	
ACC	62%	75%	73%	71%	68%	54%	39%	73%	59%	49%	58%	58%	56%	49%	
B.Av	+0.1	+1.7	+15	+23	+32	+33	+4	+0.4	+19	+0.7	+0.1	+0.0	+0.1	+0.1	

A high yielding, early maturing type of bull, well suited to the domestic market or bigger framed cows. (Video available online).

LOT 67 MINNAMURRA SHADRACH S26 (AI)

P.A.R. ASCAPE 89A
SIRE: DOUBLE S JSF RAWHIDE 260D

UNEEDA YASEMIN 260Y

CODIAK SO LONG GEORGE 6Z

DAM: MINNAMURRA 6Z LIGHTNING LADY P174

MINNAMURRA 4Y LIGHTNING LADY K10

BORN: 3/4/2021
 COLOUR: Speckled
 IDENTIFIER: MPC S26
 DNA TESTS: P:F R:F M:F
 L:C/C

\$ _____

July 2022 Speckle Park Group Breedplan

Calving Ease		Growth & Maternal						Fertility		Carcase					
	GL	BW	200	400	600	MCW	Milk	SS	CWT	EMA	RIB	RUMP	RBY	IMF	
EBV	+1.1	+2.3	+11	+16	+16	+7	+2	+0.1	+8	+0.8	+0.3	+0.3	+0.0	+0.0	
ACC	55%	73%	70%	69%	66%	52%	30%	71%	58%	48%	57%	57%	55%	49%	
B.Av	+0.1	+1.7	+15	+23	+32	+33	+4	+0.4	+19	+0.7	+0.1	+0.0	+0.1	+0.1	

A lighter growth, strong headed sire type of bull. An efficient moving, easy doing sire who will cover his cows quickly. (Video available online).



LOT 68 MINNAMURRA SHAKESPEARE S29 (AI)

HS UNTAPPED 3A	BORN:	31/3/2021
SIRE: JOHNER STOCK FARM UNMARKED 2D	COLOUR:	Speckled
JENCREST YAVONNA 6Y	IDENTIFIER:	MPC S29
CODIAK CRIKEY GNK 13U	DNA TESTS:	P:F R:F M:C L:C/T
DAM: SIX STAR 13U PENELOPE G29		
LAKEVIEW PENELOPE 5P	\$	_____

July 2022 Speckle Park Group Breedplan

Calving Ease		Growth & Maternal						Fertility		Carcase					
	GL	BW	200	400	600	MCW	Milk	SS	CWT	EMA	RIB	RUMP	RBY	IMF	
EBV	+2.4	+1.7	+7	+17	+22	+28	-1	+1.7	+13	+1.3	+1.8	+2.4	-0.8	+0.2	
ACC	63%	77%	74%	71%	68%	53%	36%	74%	59%	49%	56%	56%	54%	47%	
B.Av	+0.1	+1.7	+15	+23	+32	+33	+4	+0.4	+19	+0.7	+0.1	+0.0	+0.1	+0.1	

A deep bodied, high-capacity bull with a great hindquarter and depth over the jump muscle. Lot 68 will add fertility, softness and muscle all in the one package.

LOT 69 MINNAMURRA SOCRATES S48 (ET)

RIVER HILL TOUCHDOWN 50T
SIRE: RIVER HILL CRUSADER 025C

RIVER HILL ALYNDA 025A

CODIAK CRIKEY GNK 13U

DAM: SIX STAR 13U PENELOPE G29

LAKEVIEW PENELOPE 5P

BORN: 24/4/2021

COLOUR: White

IDENTIFIER: MPC S48

DNA TESTS: P:F R:F M:C
L:C/C

\$ _____

July 2022 Speckle Park Group Breedplan

Calving Ease		Growth & Maternal						Fertility		Carcase					
	GL	BW	200	400	600	MCW	Milk	SS	CWT	EMA	RIB	RUMP	RBY	IMF	
EBV	+0.0	+0.0	+10	+21	+26	+25	+1	+0.6	+20	+1.4	+0.6	+0.8	-0.1	+0.2	
ACC	51%	62%	59%	58%	56%	45%	34%	56%	48%	40%	47%	47%	45%	40%	
B.Av	+0.1	+1.7	+15	+23	+32	+33	+4	+0.4	+19	+0.7	+0.1	+0.0	+0.1	+0.1	

A slick, fine coated bull with a lot of softness and heart room. An easy care, young sire with efficient growth and a low birthweight. (Video available online).





LOT 70 MINNAMURRA SOLOMON S50 (ET)

P.A.R. ASCAPE 89A
SIRE: DOUBLE S JSF RAWHIDE 260D
 UNEEDA YASEMIN 260Y

BORN: 4/5/2021
 COLOUR: White
 IDENTIFIER: MPC S50
 DNA TESTS: P:F R:F M:F
 L:C/T

A & W 15R
DAM: MINNAMURRA 15R LIGHTNING LADY J6
 STAR BANK 90P

\$ _____

July 2022 Speckle Park Group Breedplan

Calving Ease		Growth & Maternal						Fertility		Carcase					
	GL	BW	200	400	600	MCW	Milk	SS	CWT	EMA	RIB	RUMP	RBY	IMF	
EBV	+2.3	+4.1	+18	+22	+29	+25	+3	+0.0	+15	+1.0	+0.4	+0.4	+0.1	+0.1	
ACC	52%	74%	64%	61%	62%	50%	26%	52%	49%	37%	45%	45%	44%	41%	
B.Av	+0.1	+1.7	+15	+23	+32	+33	+4	+0.4	+19	+0.7	+0.1	+0.0	+0.1	+0.1	

A very quiet, good natured bull with good depth of flank and constitution well suited to later maturing cows.

LOT 71 MINNAMURRA SAVOY S11 (AI)

P.A.R. ASCAPE 89A
SIRE: DOUBLE S JSF RAWHIDE 260D
 UNEEDA YASEMIN 260Y
 REDNECK JSF WHISKEY 4B
DAM: MINNAMURRA 4B TORI P245
 MINNAMURRA 300X TORI J87

BORN: 3/4/2021
 COLOUR: Speckled
 IDENTIFIER: MPC S11
 DNA TESTS: P:F R:F M:F
 L:C/C

\$ _____

July 2022 Speckle Park Group Breedplan

Calving Ease		Growth & Maternal						Fertility		Carcase					
	GL	BW	200	400	600	MCW	Milk	SS	CWT	EMA	RIB	RUMP	RBY	IMF	
EBV	+1.4	-0.1	+1	+6	+2	+3	+1	-0.5	+4	+0.3	+2.3	+3.1	-1.7	+0.6	
ACC	62%	74%	73%	71%	68%	54%	30%	74%	60%	50%	59%	59%	56%	50%	
B.Av	+0.1	+1.7	+15	+23	+32	+33	+4	+0.4	+19	+0.7	+0.1	+0.0	+0.1	+0.1	

A very slick coated, fine haired bull with a smooth muscle pattern and not coarse in any way. Have a night out with Savoy, he's perfect for heifers. (Video available online).



F1 SPECKLE PARK x ANGUS PTIC COMMERCIAL HEIFERS

A great line of two-year-old PTIC maiden heifers out of some of Minnamurra's best Te Mania blood Angus commercial cows are offered for sale in lots of 10. Born in September 2020, these heifers are part of our commercial AI program by Minnamurra Leander or else other Minnamurra stud bulls. They are in calf to either Whiskey bulls Nighthawk N112 or Quicksilver Q2, or else JAD Kidman Cove bulls Q1 or Q2. These lovely full frame heifers are quiet in temperament, are used to being handled by horses and dogs, and should fit in the top end of any commercial herd. (Videos will be available online just prior to the sale).



LOT 72	10 X F1 PTIC HEIFERS	\$.....
LOT 73	10 X F1 PTIC HEIFERS	\$.....
LOT 74	10 X F1 PTIC HEIFERS	\$.....

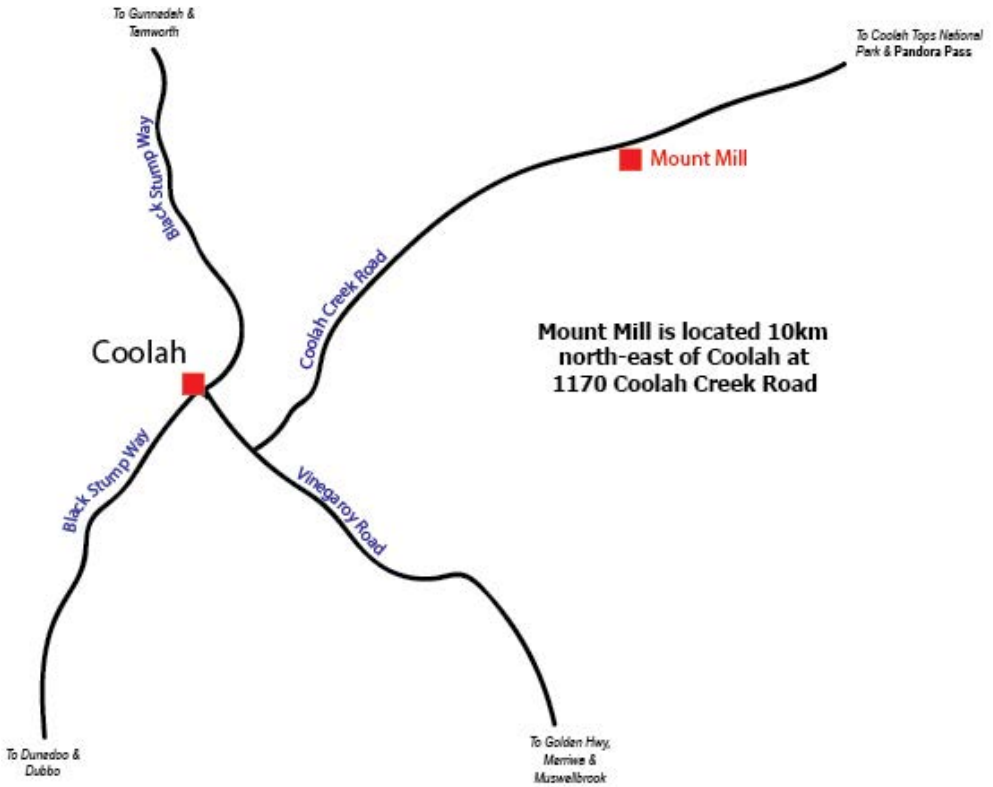


LOT 75 10 X F1 PTIC HEIFERS \$.....

LOT 76 10 X F1 PTIC HEIFERS \$.....

LOT 77 10 X F1 PTIC HEIFERS \$.....

LOT 78 10 X F1 PTIC HEIFERS \$.....



ACCOMMODATION IN COOLAH

Coolah Valley Hotel

28 Binnia St, Coolah

12 rooms with some rooms sleeping up to 5 people with a range of double/single beds, shared shower facilities and meals.

Ph: 6377 1210

Coolah Caravan Park

38 Cunningham St, Coolah

Standard, Deluxe and Executive cabins with a variety of bed configurations to suit, i.e. queen, double, king single, single. Powered and unpowered sites with shared shower facilities.

Ph: 6377 1338

Black Stump Inn

61 Binnia St, Coolah

Single, twin and family rooms, meals. Shared shower facilities

Ph: 6377 1231

Black Stump Motel

10 Campbell St, Coolah

Rated 3 stars, clean and comfy rooms

Ph: 6377 1208

Motels also available in Mudgee, Gulgong and Dunedoo.



FOR THE TRUSTED NAME IN AGRIBUSINESS

Elders are your leading sales team with proven experience and professional service to support your business. Speak to our trusted staff about your agribusiness needs today.

Nathan McConnell
Shane Rule
Nik Hannaford
Jonathan Glover
Lachlan Mack
Brian Kennedy
Lincoln McKinlay
Paul Jameson
Andrew Meara

0429 653 901
0427 456 878
0417 201 460
0428 486 887
0409 720 076
0427 844 047
0419 239 963
0428 667 998
0427 210 634

Elders Tamworth
9 Wallamore Rd, Tamworth 2340
p: 02 6765 3900
e: dg_tamworth@elders.com.au



FEEDLOT & CARCASE TRIALS

Results for Minnamurra Speckle Park x Angus Steers:

Primex 2013	1st & 2nd Eating Quality MSA Score, Individual animal 3rd Carcase Performance, MSA Score & Yield, Individual animal
Beef Spectacular 2015	1st, 2nd & 3rd Carcase Competition 3rd, 8th & 10th in the team performance out of 95 teams 3rd & 4th for feedlot performance
Beef Spectacular 2016	1st Carcase Competition Riverine Premium Beef Champion Pen 7th in team performance out of 76 teams
RNA Paddock to Plate 2016	1st MSA Meat Eating Quality, 70 day Trade team 10th Paddock to Plate 70 day team overall
Gympie Classic 2016	Highest Index Score Award The Dylan Dalton Cattleman's Choice Award
RNA Paddock to Plate 2017	1st Place pen of 6 Carcases, 70 day trade team 2nd place Paddock to Plate, 70 day team overall
RNA Paddock to Plate 2018	Highest Individual Index Score, 100 day export class
RNA Paddock to Plate 2019	Highest Individual Index Score, 70 day trade team 1st MSA Meat Eating Quality, 70 day trade team 1st MSA Meat Eating Quality, 100 day export team
RNA Paddock to Plate 2020	Champion Carcase 2020, 100 Day HGP Free Class 3rd, Pen of 6 Carcases, 100 Day HGP Free Class
National Beef Carcase Competition 2021	5th & 8th place, Pen of 3 Carcases, Grain fed export class
RNA Paddock to Plate 2021	Highest individual Index Score, 100 day export class 2nd & 3rd MSA Meat Eating Quality, 100 day export class Highest individual Index Score, 70 day trade class 1st MSA Meat Eating Quality, 70 day trade class

Results for Minnamurra Angus Steers:

Primex 2013	1st Team Eating Quality Awards 2nd Carcase Performance, MSA Score & Yield – Individual Animal 2nd Carcase Performance, MSA Score & Yield – Team Award 2nd Total Team Score
RNA Paddock to Plate 2016	1st MSA Meat Eating Quality, 100 day Trade team Highest Index Score, 100 day Trade 7th Paddock to Plate team overall
Beef Spectacular 2017	Riverine Premium Beef Champion Pen Reserve Champion Pen of 5 Steers 2nd, 5th & 8th in team performance out of 81 teams
Merriwa Annual Show	Champion pen of steers over the singular hook.
RNA Paddock to Plate 2018	2nd & 3rd of the 70 day trade class teams
Beef Spectacular 2022	1st Premium Black Angus Champion Pen 8th Reserve Champion Pen of 5 Steers 7th & 8th in Eating Quality Medals



Minnamurra Speckle Park



Better Carcasses - Better Yields - for Better Profits



Sale Lot Videos



SCAN ME

www.minnamurra.com.au